

NAMWOLF

TRANSACTIONAL

PRACTICE AREA COMMITTEE



NAMWOLF

# ABOUT THE TRANSACTIONAL PAC

From incorporation to divestiture, and at every transition along the way, businesses demand precise and reliable transactional legal services to optimize their goals and maximize their value. The highly skilled and pre-screened minority and women owned law firms of the NAMWOLF Transactional Practice Area Committee have deep experience in the full breadth of transactional law disciplines. Through the Transactional Practice Area Committee, NAMWOLF strives to facilitate opportunities for major companies and NAMWOLF member firms to develop mutually beneficial partnerships to meet the transactional legal needs of NAMWOLF member corporations and promote diversity in the profession

## BANKING & FINANCE

The Banking and Finance Subcommittee serves as an informational resource and relationship bridge between its members and businesses in the banking and finance industries. Our members are talented lawyers with experience in a wide array of domestic and international banking and finance transactions and regulatory matters. The Subcommittee seeks to leverage the collective experience of its members to promote information exchange and professional development among NAMWOLF member firms, corporate partners and in-house counsels.

## CORPORATE, M&A & SECURITIES

The Corporate, M&A, & Securities Subcommittee serves as a vehicle to build relationships between its members and businesses with needs in the practice areas encompassed by the Subcommittee. Our members are talented NAMWOLF firms and lawyers who specialize in a wide array of domestic and international corporate, M&A and securities transactions and who possess a wealth of experience in such practice areas. Through the sharing of the collective experience of its members, the Subcommittee seeks to increase the knowledge and expertise of other NAMWOLF member firms, corporate partners and in-house counsels.

## REAL ESTATE

The Real Estate Subcommittee consists of experienced real estate lawyers from member firms across the country. Our members handle sophisticated transactions for companies and financial institutions with office, commercial, retail, industrial, warehouse, mixed use projects and other assets for development, acquisition, disposition, financing, and leasing. The experience base of our members is broad and includes providing clients with creative solutions in the areas of land use, construction, debt and equity financing, EB-5 financing, eminent domain, and redevelopment.

## TAX

The Tax Subcommittee member firms have helped numerous clients of all sizes navigate difficult tax issues. The range of matters handled by firms extends to tax-free spin-offs, tax-exempt entity restructurings, and complex capital matters arising in joint ventures. Attorneys at firms include LLM credentialed tax attorneys and specialists with considerable experience in seeking guidance and rulings from the IRS and litigating and resolving tax disputes.

## TECHNOLOGY

The Technology Subcommittee comprises member firms that specialize in a full range of technology-focused, legal services. Our practices encompass complex transactions, advanced technologies, privacy, cybersecurity, information technology, enterprise technology, intellectual property, artificial intelligence (AI), Internet of things (IoT) and other technology-based services. Members include lawyers who have held leadership positions within AmLaw 100 firms and Fortune 100 companies, and who are leading transactions that impact over 11 figures in annual operating revenues. Clients served by our member firms range from start-ups to Fortune 100 to Global Fortune 500 companies.

### SHAHZAD QADRI

#### CHAIR

*Partner*

**Wong Fleming**

[sqadri@wongfleming.com](mailto:sqadri@wongfleming.com)



## CONTENTS (CLICK TO NAVIGATE TO PAGE)

[PAC Member General Contact Chart](#)

[PAC Members by Location](#)

[PAC Members by Practice Area](#)

[Banking & Finance Subcommittee](#)

[Corporate, M&A & Securities Subcommittee](#)

[Real Estate Subcommittee](#)

[Tax Subcommittee](#)

[Technology Subcommittee](#)



# PAC Member Firms

## Acceleron Law Group, LLP

[acceleronlaw.com](http://acceleronlaw.com) | CONTACT: **Fred Hasani**

[fhhasani@acceleronlaw.com](mailto:fhhasani@acceleronlaw.com)

LOCATED: Silicon Valley, CA | Southern California  
Washington, D.C.

## Avila Rodriguez Hernandez Mena & Garro LLP

[avilalaw.com](http://avilalaw.com) | CONTACT: **Asnardo Garro**

[agarro@avilalaw.com](mailto:agarro@avilalaw.com)

LOCATED: Coral Gables, FL

## Bryant Rabbino

[bryantrabbino.com](http://bryantrabbino.com) | CONTACT: **B. Seth Bryant**

[seth@bryantrabbino.com](mailto:seth@bryantrabbino.com)

LOCATED: New York, NY

## BurgherGray, LLP

[burghergray.com](http://burghergray.com) | CONTACT: **Augusto Egoavil**

[aegoavil@burghergray.com](mailto:aegoavil@burghergray.com)

LOCATED: New York, NY | Washington, D.C.  
Miami, FL

## CM Law PLLC

[cm.law](http://cm.law) | CONTACT: **Reiko Feaver**

[rfeaver@cm.law](mailto:rfeaver@cm.law)

LOCATED: Atlanta | Austin | Boston | Chicago | Dallas  
Delaware | Houston | New Jersey | New York  
Philadelphia | Washington, D.C.

## Croke Fairchild Duarte & Beres LLC

[crokefairchild.com](http://crokefairchild.com) | CONTACT: **Jessica Fairchild**

[jfairchild@crokefairchild.com](mailto:jfairchild@crokefairchild.com)

LOCATED: Chicago, IL | Milwaukee, WI

## d'Arcambal Ousley & Cuyler Burk, LLP

[darcambal.com](http://darcambal.com) | CONTACT: **Michael Braun**

[mbraun@darcambal.com](mailto:mbraun@darcambal.com)

LOCATED: New York, NY | Parsippany, NJ | Philadelphia, PA

## The Delaware Counsel Group LLC

[decg.com](http://decg.com) | CONTACT: **Ellisa Opstbaum Habbart**

[ehabbart@decg.com](mailto:ehabbart@decg.com)

LOCATED: Wilmington, DE

## Drohan Lee LLP

[dlkny.com](http://dlkny.com) | CONTACT: **Jae Lee**

[jlee@dlkny.com](mailto:jlee@dlkny.com)

LOCATED: New York, NY

## DTO Law

[dtolaw.com](http://dtolaw.com) | CONTACT: **Marcos "Mark" Tarango**

[mtarango@dtolaw.com](mailto:mtarango@dtolaw.com)

LOCATED: Los Angeles, CA | San Francisco, CA

## Flener IP & Business Law

[flip.law](http://flip.law) | CONTACT: **James Judge**

[jjudge@fleneriplaw.com](mailto:jjudge@fleneriplaw.com)

LOCATED: Chicago, IL

## Gardner Skelton, PLLC

[gardnerskelton.com](http://gardnerskelton.com) | CONTACT: **Fred Parker**

[fred@gardnerskelton.com](mailto:fred@gardnerskelton.com)

LOCATED: Charlotte, NC

## Goosmann Law Firm

[goosmannlaw.com](http://goosmannlaw.com) | CONTACT: **Aaron Adams**

[adamsa@goosmannlaw.com](mailto:adamsa@goosmannlaw.com)

LOCATED: Sioux City, IA | Sioux Falls, SD | Omaha, NE  
Spirit Lake, IA

## Grant Austin, LLC

[grantlawllc.com](http://grantlawllc.com) | CONTACT: **Maurice Grant**

[mgrant@gslawllc.com](mailto:mgrant@gslawllc.com)

LOCATED: Chicago, IL

## Heilbut LLP

[heilbutllp.com](http://heilbutllp.com) | CONTACT: **Wendy Heilbut**

[wendy@heilbutllp.com](mailto:wendy@heilbutllp.com)

LOCATED: New York, NY

## Hughes, Watters & Askanase, L.L.P.

[hwa.com](http://hwa.com) | CONTACT: **Carolyn Taylor**

[cat@hwa.com](mailto:cat@hwa.com)

LOCATED: Houston, TX

## Johnson Blumberg & Associates

[johnsonblumberg.com](http://johnsonblumberg.com) | CONTACT: **Ken Johnson**

[ken@johnsonblumberg.com](mailto:ken@johnsonblumberg.com)

LOCATED: Chicago, IL | Milwaukee, WI  
Merrillville, IN

## Kang Haggerty

[kanghaggerty.com](http://kanghaggerty.com) | CONTACT: **Jacklyn Fetbroyt**

[jfetbroyt@kanghaggerty.com](mailto:jfetbroyt@kanghaggerty.com)

LOCATED: Philadelphia, PA | Marlton, NJ

## KPPB LAW

[kppblaw.com](http://kppblaw.com) | CONTACT: **Sonjui L. Kumar**

[skumar@kppblaw.com](mailto:skumar@kppblaw.com)

LOCATED: Atlanta, GA | New York, NY | Chicago, IL  
Fairfax, VA | Fairfield, CT

## Lawrence Law

[lawrencelawllc.com](http://lawrencelawllc.com) | CONTACT: **Jennifer Brennan**

[jennifer@lawrencelawllc.com](mailto:jennifer@lawrencelawllc.com)

LOCATED: Baltimore, MD | New York, NY

## Lewis & Munday, P.C.

[lewismunday.com](http://lewismunday.com) | CONTACT: **Karen K. Brown**

[kbrown@lewismunday.com](mailto:kbrown@lewismunday.com)

LOCATED: Detroit, MI

## Love and Long, L.L.P.

[loveandlonglaw.com](http://loveandlonglaw.com) | CONTACT: **Lisa D. Love**

[llove@loveandlonglaw.com](mailto:llove@loveandlonglaw.com)

LOCATED: New York, NY | Newark, NJ  
Philadelphia, PA

## Lumens Law Group PLLC

[lumenslawgroup.com](http://lumenslawgroup.com) | CONTACT: **Li Chen**

[lchen@lumenslawgroup.com](mailto:lchen@lumenslawgroup.com)

LOCATED: Dallas, TX

## Maxson Mago & Macaulay, LLP

[em3law.com](http://em3law.com) | CONTACT: **Ajay Mago**

[amago@em3law.com](mailto:amago@em3law.com)

LOCATED: Atlanta, GA | Austin, TX | Chicago, IL  
Dallas, TX | New York, NY

## Moore & Associates

[commercialcorporatelaw.com](http://commercialcorporatelaw.com) | CONTACT: **Teya Moore**

[kkm@commercialcorporatelaw.com](mailto:kkm@commercialcorporatelaw.com)

LOCATED: Bowie, MD

## MWH Law Group

[mwhlawgroup.com](http://mwhlawgroup.com) | CONTACT: **Kerrie Murphy**

[kerrie.murphy@mwhlawgroup.com](mailto:kerrie.murphy@mwhlawgroup.com)

LOCATED: Milwaukee, WI | Chicago, IL | Indianapolis, IN  
New York, NY | West Des Moines, IA

## Novos Law LLP

[novoslawllp.com](http://novoslawllp.com) | CONTACT: **Tony Lee**

[tlee@novoslawllp.com](mailto:tlee@novoslawllp.com)

LOCATED: Los Angeles, CA

## PAG Law

[pag.law](http://pag.law) | CONTACT: **Zac Soto**

[zac@pag.law](mailto:zac@pag.law)

LOCATED: Miami, FL | New York, NY | Mexico City  
Buenos Aires, Argentina

## Peacock Law P.C.

[peacocklaw.com](http://peacocklaw.com) | CONTACT: **Justin Muehlmeier**

[JRM@PeacockLaw.com](mailto:JRM@PeacockLaw.com)

LOCATED: Albuquerque, NM | New York, NY

## Sanchez & Amador LLP

[sanchez-amador.com](http://sanchez-amador.com) | CONTACT: **David Sanchez**

[sanchez@sanchez-amador.com](mailto:sanchez@sanchez-amador.com)

LOCATED: Los Angeles, CA



# PAC Member Firms

## Sapientia Law Group PLLC

[sapientialaw.com](http://sapientialaw.com) | CONTACT: **Towle Neu**  
[towlen@sapientialaw.com](mailto:towlen@sapientialaw.com)  
OCATED: Minneapolis, MN

## SMGQ Law

[smgqlaw.com](http://smgqlaw.com) | CONTACT: **Roland Sanchez-Medina Jr.**  
[roland@smgqlaw.com](mailto:roland@smgqlaw.com)  
LOCATED: Coral Gables, FL

## Snyder & Snyder

[snyderlaw.net](http://snyderlaw.net) | CONTACT: **Leslie Snyder**  
[lsnyder@snyderlaw.net](mailto:lsnyder@snyderlaw.net)  
LOCATED: Tarrytown, NY | New York, NY | Newark, NJ

## SRD Legal Group LLP

[srdlegalgroup.com](http://srdlegalgroup.com) | CONTACT: **Jill Warning**  
[jwarning@srdlegalgroup.com](mailto:jwarning@srdlegalgroup.com)  
LOCATED: New York, NY

## The Stark Firm PLLC

[starkfirmpllc.com](http://starkfirmpllc.com) | CONTACT: **Erin Stark**  
[erinstark@starkfirmpllc.com](mailto:erinstark@starkfirmpllc.com)  
LOCATED: Atlanta, GA | Miami, FL | Washington, DC  
Philadelphia, PA | New York, NY | Houston, TX  
Los Angeles, CA

## Transcendant Law Group

[tlg.law](http://tlg.law) | CONTACT: **Richard Montgomery II**  
[rmontgomeryii@tlg.law](mailto:rmontgomeryii@tlg.law)  
LOCATED: New Orleans, LA

## Walsh Pizzi O'Reilly Falanga LLP

[walsh.law](http://walsh.law) | CONTACT: **Stephen Falanga**  
[sfalanga@walsh.law](mailto:sfalanga@walsh.law)  
LOCATED: Newark, NJ | New York, NY | Philadelphia, PA

## Wargo French Singer

[wargofrench.com](http://wargofrench.com) | CONTACT: **Alina Singer**  
[asinger@wargofrench.com](mailto:asinger@wargofrench.com)  
LOCATED: Atlanta, GA | Los Angeles, CA | Miami, FL

## Wong Fleming

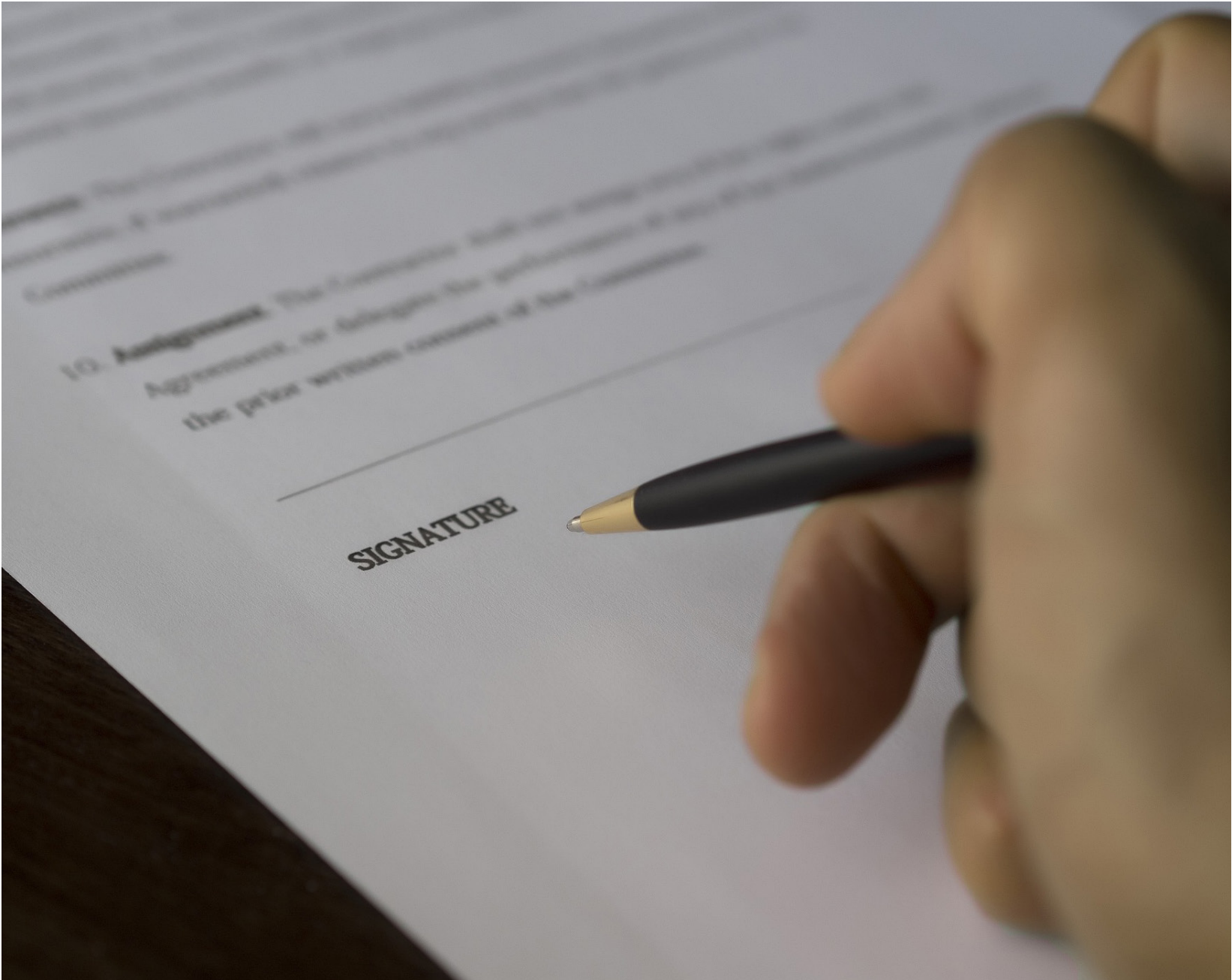
[wargofrench.com](http://wargofrench.com) | CONTACT: **Ramina Dehkhoda-Steele**  
[rdehkhoda@wongfleming.com](mailto:rdehkhoda@wongfleming.com)  
LOCATED: Seattle, WA | Redmond, WA | San Diego, CA  
Houston, TX | Princeton, NJ | Atlanta, GA

## Zuber Lawler

[zuberlawler.com](http://zuberlawler.com) | CONTACT: **Eileen Letts**  
[eletts@zuberlawler.com](mailto:eletts@zuberlawler.com)  
LOCATED: Austin, TX | Chicago, IL | Denver, CO  
Los Angeles, CA | New York, NY | Phoenix, AZ  
Silicon Valley, CA

## ZVMLaw PLLC

[zvmlaw.com](http://zvmlaw.com) | CONTACT: **Anne Linder**  
[anne@zvmlaw.com](mailto:anne@zvmlaw.com)  
LOCATED: Ann Arbor, MI | New York, NY | Chicago, IL





# PAC Members by Location | Page 1 of 2

CMAS=Corporate, M&A & Securities | TAX=Tax | BF=Banking & Finance | TEC=Technology | RE=Real Estate

## Arizona

Zuber Lawler

📁 PRACTICE AREAS: CMAS, BF, TEC, RE

## California

Accelaron Law Group, LLP

📁 PRACTICE AREAS: CMAS, TEC

DTO Law

📁 PRACTICE AREAS: BF, CMAS, RE, TEC

Novos Law LLP

📁 PRACTICE AREAS: CMAS, RE

Sanchez & Amador LLP

📁 PRACTICE AREAS: BF, TEC, RE

The Stark Firm PLLC

📁 PRACTICE AREAS: CMAS, BF, RE

Wargo French Singer LLP

📁 PRACTICE AREAS: CMAS, BF, TEC, RE

Wong Fleming

📁 PRACTICE AREAS: CMAS, BF, TEC, RE

Zuber Lawler

📁 PRACTICE AREAS: CMAS, BF, TEC, RE

## Colorado

Zuber Lawler

📁 PRACTICE AREAS: CMAS, TAX, BF, TEC, RE

## Connecticut

KPPB LAW

📁 PRACTICE AREAS: CMAS, BF, TEC, RE

## Delaware

The Delaware Counsel Group LLC

📁 PRACTICE AREA: CMAS

## Florida

Avila Rodriguez Hernandez Mena  
& Garro LLP

📁 PRACTICE AREAS: CMAS, BF, RE, TEC

BurgherGray, LLP

📁 PRACTICE AREAS: CMAS, BF, TEC, TAX

Maxson Mago & Macaulay, LLP

📁 PRACTICE AREAS: CMAS, BF, TEC, RE

PAG Law

📁 PRACTICE AREAS: CMAS, BF, RE, TEC

SMGQ Law

📁 PRACTICE AREAS: CMAS, BF, RE

The Stark Firm PLLC

📁 PRACTICE AREAS: CMAS, BF, RE

Wargo French Singer LLP

📁 PRACTICE AREAS: CMAS, BF, TEC, RE

## Georgia

Accelaron Law Group, LLP

📁 PRACTICE AREAS: CMAS, TEC

CM Law PLLC

📁 PRACTICE AREAS: CMAS, TAX, BF, TEC, RE

KPPB LAW

📁 PRACTICE AREAS: CMAS, BF, TEC, RE

Maxson Mago & Macaulay, LLP

📁 PRACTICE AREAS: CMAS, BF, TEC, RE

The Stark Firm PLLC

📁 PRACTICE AREAS: CMAS, BF, RE

Wargo French Singer LLP

📁 PRACTICE AREAS: CMAS, BF, TEC, RE

Wong Fleming

📁 PRACTICE AREAS: CMAS, BF, TEC, RE

## Idaho

Wong Fleming

📁 PRACTICE AREAS: CMAS, BF, TEC, RE

## Illinois

CM Law PLLC

📁 PRACTICE AREAS: CMAS, TAX, BF, TEC, RE

Croke Fairchild Duarte & Beres LLC

📁 PRACTICE AREAS: CMAS, TAX, BF, TEC, RE

Flener IP & Business Law

📁 PRACTICE AREA: TEC

Grant Austin, LLC

📁 PRACTICE AREAS: CMAS, BF, RE

Johnson Blumberg & Associates

📁 PRACTICE AREAS: BF, RE

KPPB LAW

📁 PRACTICE AREAS: CMAS, BF, TEC, RE

Maxson Mago & Macaulay, LLP

📁 PRACTICE AREAS: CMAS, BF, TEC, RE

MWH Law Group

📁 PRACTICE AREAS: TEC, BF, CMAS, RE

Zuber Lawler

📁 PRACTICE AREAS: CMAS, BF, TEC, RE

ZVMLaw PLLC

📁 PRACTICE AREAS: TEC

## Indiana

Johnson Blumberg & Associates

📁 PRACTICE AREAS: BF, RE

MWH Law Group

📁 PRACTICE AREAS: TEC, BF, CMAS, RE

## Iowa

Goosmann Law Firm

📁 PRACTICE AREAS: BF, CMAS, RE, TEC

MWH Law Group

📁 PRACTICE AREAS: TEC, BF, CMAS, RE

## Louisiana

Transcendant Law Group

📁 PRACTICE AREA: CMAS

## Maryland

Lawrence Law

📁 PRACTICE AREA: CMAS, RE

Moore & Associates

📁 PRACTICE AREA: TAX

## Massachusetts

CM Law PLLC

📁 PRACTICE AREAS: CMAS, TAX, BF, TEC, RE

## Michigan

Lewis & Munday, P.C.

ZVMLaw PLLC

📁 PRACTICE AREAS: TEC

## Minnesota

Sapientia Law Group PLLC

📁 PRACTICE AREAS: CMAS, BF, TEC, RE

Zuber Lawler

📁 PRACTICE AREAS: CMAS, TAX, BF, TEC, RE

## Nebraska

Goosmann Law Firm

📁 PRACTICE AREAS: BF, CMAS, RE, TEC

## New Jersey

d'Arcambal Ousley & Cuyler Burk, LLP

📁 PRACTICE AREAS: CMAS, BF, RE

Kang Haggerty

📁 PRACTICE AREAS: CMAS, BF, RE

Love and Long, L.L.P

📁 PRACTICE AREAS: CMAS, BF, RE

Snyder & Snyder, LLP

📁 PRACTICE AREA: RE

Walsh Pizzi O'Reilly Falanga LLP

📁 PRACTICE AREAS: BF, RE, TEC

Wong Fleming

📁 PRACTICE AREAS: CMAS, BF, TEC, RE

# PAC Members by Location | Page 2 of 2

CMAS=Corporate, M&A & Securities | TAX=Tax | BF=Banking & Finance | TEC=Technology | RE=Real Estate

## New Mexico

Peacock Law P.C.

📁 PRACTICE AREA: TEC

## New York

Bryant Rabbino

BurgherGray, LLP

📁 PRACTICE AREAS: CMAS, BF, TEC, TAX

CM Law PLLC

📁 PRACTICE AREAS: CMAS, TAX, BF, TEC, RE

d'Arcambal Ousley & Cuyler Burk, LLP

📁 PRACTICE AREAS: CMAS, BF, RE

DTO Law

📁 PRACTICE AREAS: BF, CMAS, RE, TEC

Heilbut LLP

📁 PRACTICE AREAS: CMAS

KPPB LAW

📁 PRACTICE AREAS: CMAS, BF, TEC, RE

Lawrence Law

📁 PRACTICE AREA: CMAS, RE

Love and Long, L.L.P

📁 PRACTICE AREAS: CMAS, BF, RE

Maxson Mago & Macaulay, LLP

📁 PRACTICE AREAS: CMAS, BF, TEC, RE

MWH Law Group

📁 PRACTICE AREAS: TEC, BF, CMAS, RE

Peacock Law P.C.

📁 PRACTICE AREA: TEC

Snyder & Snyder, LLP

📁 PRACTICE AREA: RE

The Stark Firm PLLC

📁 PRACTICE AREAS: CMAS, BF, RE

Walsh Pizzi O'Reilly Falanga LLP

📁 PRACTICE AREAS: BF, RE, TEC

Wong Fleming

📁 PRACTICE AREAS: CMAS, BF, TEC, RE

Zuber Lawler

📁 PRACTICE AREAS: CMAS, BF, TEC, RE

ZVMLaw PLLC

📁 PRACTICE AREAS: TEC

## North Carolina

Gardner Skelton, PLLC

📁 PRACTICE AREAS: CMAS, TAX

## Ohio

Zuber Lawler

📁 PRACTICE AREAS: CMAS, BF, TEC, RE

## Pennsylvania

CM Law PLLC

📁 PRACTICE AREAS: CMAS, TAX, BF, TEC, RE

d'Arcambal Ousley & Cuyler Burk, LLP

📁 PRACTICE AREAS: CMAS, BF, RE

Kang Haggerty

📁 PRACTICE AREAS: CMAS, BF, RE

Love and Long, L.L.P

📁 PRACTICE AREAS: CMAS, BF, RE

The Stark Firm PLLC

📁 PRACTICE AREAS: CMAS, BF, RE

Walsh Pizzi O'Reilly Falanga LLP

📁 PRACTICE AREAS: BF, RE, TEC

## South Dakota

Goosmann Law Firm

📁 PRACTICE AREAS: BF, CMAS, RE, TEC

## Texas

CM Law PLLC

📁 PRACTICE AREAS: CMAS, TAX, BF, TEC, RE

Hughes Watters & Askanase, LLP

Lumens Law Group PLLC

📁 PRACTICE AREA: TEC

Maxson Mago & Macaulay, LLP

📁 PRACTICE AREAS: CMAS, BF, TEC, RE

The Stark Firm PLLC

📁 PRACTICE AREAS: CMAS, BF, RE

Wong Fleming

📁 PRACTICE AREAS: CMAS, BF, TEC, RE

Zuber Lawler

📁 PRACTICE AREAS: CMAS, TAX, BF, TEC, RE

## Virginia

KPPB LAW

📁 PRACTICE AREAS: CMAS, BF, TEC, RE

## Washington

Wong Fleming

📁 PRACTICE AREAS: CMAS, BF, TEC, RE

Zuber Lawler

📁 PRACTICE AREAS: CMAS, BF, TEC, RE

## Washington D.C.

BurgherGray, LLP

📁 PRACTICE AREAS: CMAS, BF, TEC, TAX

CM Law PLLC

📁 PRACTICE AREAS: CMAS, TAX, BF, TEC, RE

The Stark Firm PLLC

📁 PRACTICE AREAS: CMAS, BF, RE

## Wisconsin

Croke Fairchild Duarte & Beres LLC

📁 PRACTICE AREAS: CMAS, TAX, BF, TEC, RE

Johnson Blumberg & Associates

📁 PRACTICE AREAS: BF, RE

MWH Law Group

📁 PRACTICE AREAS: TEC, BF, CMAS, RE



# PAC Members by Practice Area

## Banking & Finance

Acceleron Law Group, LLP

📍 LOCATED: CA, GA

Avila Rodriguez Hernandez Mena & Garro LLP

📍 LOCATED: FL

BurgherGray LLP

📍 LOCATED: NY, D.C., FL

Croke Fairchild Duarte & Beres LLC

📍 LOCATED: IL, WI

CM Law PLLC

📍 LOCATED: GA, TX, MA, IL, NY, D.C.

d'Arcambal Ousley & Cuyler Burk, LLP

📍 LOCATED: NJ, NY, PA

DTO Law

📍 LOCATED: CA, NY

Grant Austin, LLC

📍 LOCATED: IL

Johnson, Blumberg & Associates

📍 LOCATED: IL, WI, IN, MI, IA

Kang Haggerty

📍 LOCATED: PA, NJ

KPPB LAW

📍 LOCATED: CT, GA, IL, NY, VA

Love and Long, L.L.P.

📍 LOCATED: NY, NJ, PA

MWH Law Group LLP

📍 LOCATED: WI, IN, IL, IA, NY

PAG Law

📍 LOCATED: FL, NY, Mexico, Argentina

Sanchez & Amador

📍 LOCATED: CA

Sapientia Law Group, PLLC

📍 LOCATED: MN

SRD Legal Group LLP

📍 LOCATED: NY

Wargo French Singer LLP

📍 LOCATED: GA, FL, CA

Wong Fleming

📍 LOCATED: WA, CA, NY, TX, GA

Zuber Lawler

📍 LOCATED: AZ, CA, CO, IL, MN, NY

Avila Rodriguez Hernandez Mena & Garro LLP

📍 LOCATED: FL

BurgherGray LLP

📍 LOCATED: NY, D.C., FL

Croke Fairchild Duarte & Beres LLC

📍 LOCATED: IL, WI

CM Law PLLC

📍 LOCATED: GA, TX, MA, IL, NY, D.C.

d'Arcambal Ousley & Cuyler Burk, LLP

📍 LOCATED: NJ, NY, PA

The Delaware Counsel Group LLC

📍 LOCATED: DE

DTO Law

📍 LOCATED: CA, NY

Gardner Skelton, PLLC

📍 LOCATED: NC

Grant Austin, LLC

📍 LOCATED: IL

Kang Haggerty

📍 LOCATED: PA, NJ

KPPB LAW

📍 LOCATED: CT, GA, IL, NY, VA

Love and Long, L.L.P.

📍 LOCATED: NY, NJ, PA

MWH Law Group LLP

📍 LOCATED: WI, IN, IL, IA, NY

Novos Law LLP

📍 LOCATED: CA

PAG Law

📍 LOCATED: FL, NY, Mexico, Argentina

Sapientia Law Group

📍 LOCATED: MN

SRD Legal Group LLP

📍 LOCATED: NY

Transcendant Law Group

📍 LOCATED: LA

Wargo French Singer LLP

📍 LOCATED: GA, FL, CA

Wong Fleming

📍 LOCATED: WA, CA, NY, TX, GA

Zuber Lawler

📍 LOCATED: AZ, CA, CO, IL, MN, NY

## Corporate, M&A & Securities

Acceleron Law Group, LLP

📍 LOCATED: CA, GA

## Real Estate

Avila Rodriguez Hernandez Mena & Garro LLP

📍 LOCATED: FL

Croke Fairchild Duarte & Beres LLC

📍 LOCATED: IL, WI

# PAC Members by Practice Area

## CM Law PLLC

📍 **LOCATED:** GA, TX, MA, IL, NY, D.C.

## d'Arcambal Ousley & Cuyler Burk, LLP

📍 **LOCATED:** NJ, NY, PA

## DTO Law

📍 **LOCATED:** CA, NY

## Grant Austin, LLC

📍 **LOCATED:** IL

## Johnson, Blumberg & Associates

📍 **LOCATED:** IL, WI, IN, MI, IA

## Kang Haggerty

📍 **LOCATED:** PA, NJ

## KPPB LAW

📍 **LOCATED:** CT, GA, IL, NY, VA

## Love and Long, L.L.P.

📍 **LOCATED:** NY, NJ, PA

## MWH Law Group LLP

📍 **LOCATED:** WI, IN, IL, IA, NY

## Novos Law LLP

📍 **LOCATED:** CA

## PAG Law

📍 **LOCATED:** FL, NY, Mexico, Argentina

## Sanchez & Amador

📍 **LOCATED:** CA

## Sapientia Law Group, PLLC

📍 **LOCATED:** MN

## Snyder & Snyder, LLP

📍 **LOCATED:** NJ, NY

## SRD Legal Group LLP

📍 **LOCATED:** NY

## Wargo French Singer LLP

📍 **LOCATED:** GA, FL, CA

## Wong Fleming

📍 **LOCATED:** WA, CA, NY, TX, GA

## Zuber Lawler

📍 **LOCATED:** AZ, CA, CO, IL, MN, NY

## Tax

## Avila Rodriguez Hernandez Mena & Garro LLP

📍 **LOCATED:** FL

## CM Law PLLC

📍 **LOCATED:** GA, TX, MA, IL, NY, D.C.

## Gardner Skelton, PLLC

📍 **LOCATED:** NC

## SMGQ Law

📍 **LOCATED:** FL

## Zuber Lawler

📍 **LOCATED:** AZ, CA, CO, IL, MN, NY





# PAC Members by Practice Area

## Technology

Acceleron Law Group, LLP

📍 LOCATED: CA, GA

BurgherGray LLP

📍 LOCATED: NY, D.C., FL

CM Law PLLC

📍 LOCATED: GA, TX, MA, IL, NY, D.C.

Croke Fairchild Duarte & Beres LLC

📍 LOCATED: IL, WI

DTO Law

📍 LOCATED: CA, NY

Flener IP & Business Law

📍 LOCATED: TEC

Goosmann Law Firm, PLC

📍 LOCATED: IA, SD, NE

KPPB LAW

📍 LOCATED: CT, GA, IL, NY, VA

Lumens Law Group PLLC

📍 LOCATED: TX

MWH Law Group LLP

📍 LOCATED: WI, IN, IL, IA, NY

PAG Law

📍 LOCATED: FL, NY, Mexico, Argentina

Peacock Law P.C.

📍 LOCATED: NM, NY

Sanchez & Amador

📍 LOCATED: CA

Sapientia Law Group

📍 LOCATED: MN

SRD Legal Group LLP

📍 LOCATED: NY

Wargo French Singer LLP

📍 LOCATED: GA, FL, CA

Wong Fleming

📍 LOCATED: WA, CA, NY, TX, GA

Zuber Lawler

📍 LOCATED: AZ, CA, CO, IL, MN, NY



# NAMWOLF | TRANSACTIONAL PRACTICE AREA COMMITTEE

## BANKING AND FINANCE SUBCOMMITTEE

The Banking and Finance Subcommittee of the Transactional Practice Area Committee serves as an informational resource and relationship bridge between its members and businesses in the banking and finance industries. Our members are talented lawyers with experience in a wide array of domestic and international banking and finance transactions and regulatory matters. The Subcommittee seeks to leverage the collective experience of its members to promote information exchange and professional development among NAMWOLF member firms, corporate partners and in-house counsels.

### Specific Areas of Expertise

- Asset-based financing
- Asset management (private investment funds)
- Bankruptcy and credit restructuring
- Commercial and industrial lending
- Commercial and residential real estate finance
- Community Reinvestment Act (CRA) investments and community development lending
- Consumer finance
- Corporate and commercial transactions
- Debt and equity capital markets transactions
- Debt collections
- Debt private placements
- Institutional investing
- Letters of credit
- Loan trading and syndication
- Mortgage loan servicing
- Portfolio management and debt servicing
- Private equity transactions (including PIPEs)
- Public finance
- Real estate foreclosures
- Risk retention financing
- State and Federal Regulatory Matters
- Structured asset purchases/sales
- Structured finance and securitization
- Structured products and derivatives
- Venture capital and early stage financing
- Whole loan purchases/sales

### Banking & Finance Subcommittee Co-Chairs:



**Brian Idehen**  
BurgherGray LLP  
Partner  
[bidehen@burghergray.com](mailto:bidehen@burghergray.com)



**Erin Stark**  
The Stark Firm, PLLC  
Managing Member  
[erinstark@starkfirmpllc.com](mailto:erinstark@starkfirmpllc.com)



## Avila Rodriguez Hernandez Mena & Garro LLP

[avilalaw.com](http://avilalaw.com)

**Office Location** | Coral Gables, FL

**Firm Contact** | Asnardo Garro | [agarro@avilalaw.com](mailto:agarro@avilalaw.com)

### BRIEF DESCRIPTION

Avila's banking and finance practice areas regularly advise domestic and foreign financial institutions, investors, and various other financial services organizations, including money services businesses, broker-dealers and registered investment advisors, on a variety of regulatory and transactional matters central to their businesses.

## BurgherGray LLP

[burghergray.com](http://burghergray.com)

**Office Locations** | New York, NY | Washington, D.C. | Miami, FL

**Firm Contact** | Gopal Burgher | [gburgher@burghergray.com](mailto:gburgher@burghergray.com) **CO-CHAIR**

### BRIEF DESCRIPTION

With 70+ years combined experience and many financial services clients, our capital markets, finance and investment management attorneys can help with your banking, fund and complex finance needs, including debt private placements; structured finance/securitization; ABL and C&I lending; real estate finance; bankruptcy; fund formation; and securities regulatory advice.

## CM Law PLLC

[cm.law](http://cm.law)

**Office Locations** | Atlanta, GA | Austin, TX | Boston, MA | Chicago, IL | Dallas, TX | Houston, TX | Newark, NJ | New York, NY | Philadelphia, PA | Washington, D.C.

Wilmington, DE

**Firm Contact** | Sharon Lewonski | [slewonski@cm.law](mailto:slewonski@cm.law)

### BRIEF DESCRIPTION

We represent corporate, private equity, lender and institutional banking clients on the international, national, state and local level in areas such as structured finance and loan documentation, public body and private investment bond transactions, creditors' rights, distraint and foreclosures, REO portfolio management, and government, regulatory and compliance.

## Croke Fairchild Duarte & Beres LLC

[crokefairchild.com](http://crokefairchild.com)

**Office Locations** | Chicago, IL | Milwaukee, WI

**Firm Contact** | Jessica Fairchild | [jfairchild@crokefairchild.com](mailto:jfairchild@crokefairchild.com)

### BRIEF DESCRIPTION

Croke Fairchild has substantial experience working with clients on financing transactions and ongoing liquidity management in many different business cycles. We work with sophisticated clients on innovative and demanding leveraged finance transactions. We represent clients in structuring, negotiating, and documenting all aspects of debt financing transactions.

## d'Arcambal Ousley & Cuyler Burk

[darcambal.com](http://darcambal.com)

**Office Locations** | New York, NY | Parsippany, NJ | Philadelphia, PA

**Firm Contact** | Michael Braun | [mbraun@darcambal.com](mailto:mbraun@darcambal.com)

### BRIEF DESCRIPTION

The Firm represents financial institutions and government agencies. Our lawyers have practiced as partners and senior associates at large corporate law firms and in corporate law departments. The Firm's expertise includes all forms of financings, including securitizations and structured finance of all asset types, and asset and stock purchase agreements.

## DTO LAW

[dtolaw.com](http://dtolaw.com)

**Office Locations** | Los Angeles, CA | Silicon Valley, CA | New York, NY

**Firm Contact** | Marcos "Mark" Tarango | [mtarango@dtolaw.com](mailto:mtarango@dtolaw.com)

### BRIEF DESCRIPTION

DTO Law can help companies develop a strategic plan that is compatible with the overall business strategy. We have assisted clients with the purchase, sale, development and financing of real property transactions. We have experience in acquisition and disposition, CC&R and REAs, development, financing, land use entitlements, leasing, timeshares, and fractional ownership.

## Goosmann Law Firm, PLC

[goosmannlaw.com](http://goosmannlaw.com)

**Office Location** | Omaha, NE | Sioux City, IA | Spirit Lake, IA | Sioux Falls, SD

**Firm Contact** | Warren Ford | [fordw@goosmannlaw.com](mailto:fordw@goosmannlaw.com)

### BRIEF DESCRIPTION

Partner Warren J. Ford III is a litigation and transactional attorney, who represents creditors, debtors, banks, and business leaders in commercial litigation, out-of-court workouts, and bankruptcy proceedings. As a 2021-2024 Best Lawyers Ones to Watch, 2022-2023 Super Lawyers Rising Star, and ABI's 2022 Top 40 under 40, Warren leads the Firm's Banking practice area.

## Grant Austin, LLC

[grantlawllc.com](http://grantlawllc.com)

**Office Location** | Chicago, IL

**Firm Contact** | Maurice Grant | [mgrant@grantlawllc.com](mailto:mgrant@grantlawllc.com)

### BRIEF DESCRIPTION

Grant Austin, LLC has considerable experience representing the interests of creditors and lending institutions in federal bankruptcy and state courts covering a wide range of issues. We are equipped to protect the interests of secured and unsecured creditors involved in any contested matters under any chapter of the Bankruptcy Code. We are also able to represent the interests of any creditor initiating a collection action or other commercial litigation against an adverse party. Grant Law's vast experience in transactional matters further qualifies our firm to provide counsel to any creditor in the work-out or liquidation of a commercial entity.

## Johnson, Blumberg & Associates

[johnsonblumberg.com](http://johnsonblumberg.com)

**Office Locations** | Chicago, IL | Milwaukee, WI | Merrillville, IN | Kalamazoo, MI | Des Moines, IA

**Firm Contact** | Robert Blumberg | [rob@johnsonblumberg.com](mailto:rob@johnsonblumberg.com)

### BRIEF DESCRIPTION

Johnson, Blumberg & Associates, LLC is a dynamic minority-certified law firm that represents mortgage lenders and servicers in the areas of Foreclosure, Bankruptcy, Title Claims, Housing Code Litigation, Evictions, Closings, Collections and Replevins throughout the Midwest. Our unique and broad footprint in the Midwest allows us to be of greater service to our clients.

## Kang Haggerty

[khflaw.com](http://khflaw.com)

**Office Locations** | Philadelphia, PA | Marlton, NJ

**Firm Contact** | Jacklyn Fetbroyt | [jfetbroyt@khflaw.com](mailto:jfetbroyt@khflaw.com)

### BRIEF DESCRIPTION

KH represents lenders and borrowers in a broad range of financial matters: negotiation and preparation of loan documents, securing indebtedness/collateral analysis, workouts/ forbearance/restructuring agreements, loan sales, lender liability, and creditors rights. Our attorneys find creative solutions to their clients' lending and financing needs.

## KPPB LAW

[kppblaw.com](http://kppblaw.com)

**Office Locations** | Atlanta, GA | New York, NY | Chicago, IL | Fairfax, VA | Fairfield, CT

**Firm Contact** | Kirtan Patel | [kpatel@kppblaw.com](mailto:kpatel@kppblaw.com)

### BRIEF DESCRIPTION

Our commercial real estate finance team assists both borrowers and lenders in a wide variety of debt related financing. Our experience includes primary and mezzanine lending transactions for a variety of industries including multi-family, healthcare, hospitality and industrial properties.

## Love and Long, L.L.P.

[loveandlonglaw.com](http://loveandlonglaw.com)

**Office Locations** | New York, NY | Newark, NJ | Philadelphia, PA

**Firm Contact** | Lisa Love | [llove@loveandlonglaw.com](mailto:llove@loveandlonglaw.com)

### BRIEF DESCRIPTION OF experience

Love and Long LLP and its attorneys have represented public agencies, commercial banks, insurance companies and other prestigious institutional lenders, as well as borrowers, in a wide range of commercial finance transactions including corporate and public finance, securities issuances, mergers and acquisitions, project redevelopment finance, tax credit transactions and other commercial transactions. Attorneys at the Firm bring professionalism, attention to detail, creativity and commercial sensitivity to every representation. Recently, the Firm represented a syndicate of lenders in a multi-million credit facility with Comcast.

## Maxson Mago & Macaulay, LLP

[em3law.com](http://em3law.com)

**Office Locations** | Florida | Georgia | Illinois | New York | Texas

**Firm Contact** | Leslie Chervokas | [lchervokas@em3law.com](mailto:lchervokas@em3law.com)

### BRIEF DESCRIPTION

Some of the Firm's largest clients are bank holding companies, commercial banks, investment banks, insurance companies, leasing companies, asset-based lenders or institutional real estate companies. Our Banking & Financial Services practices also represents finance companies, financial service boutiques and other financial institutions and investors, as well as borrowers.

## Moore & Associates

[commercialcorporatelaw.com](http://commercialcorporatelaw.com)

**Office Locations** | Bowie, MD

**Firm Contact** | Kieyasien (Teya) Moore | [kkm@commercialcorporatelaw.com](mailto:kkm@commercialcorporatelaw.com)

### BRIEF DESCRIPTION

M&A concentrates on structured finance, fund formation, debt and equity investments, large institutional lenders, and national foundations. We currently serves as counsel to SBA warehouse lenders, large institutional banks, USDA-RUS, MD – Office of the Attorney General, NCUA and private foundations like the AECF.

## MWH Law Group LLP

[mwhlawgroup.com](http://mwhlawgroup.com)

**Office Locations** | Chicago, IL | Madison, WI | Indianapolis, IN | Milwaukee, WI  
New York, NY | West Des Moines, IA

**Firm Contact** | Kerrie Murphy | [kerrie.murphy@mwhlawgroup.com](mailto:kerrie.murphy@mwhlawgroup.com)

### BRIEF DESCRIPTION OF experience

MWH provides practical counsel and comprehensive legal defense for banks and financial institutions in matters relating to public and corporate finance, and commercial lending and litigation. Collectively, we have litigated and arbitrated hundreds of disputes involving insurance and consumer fraud, RICO, and statutes such as CFPA, ECOA, FCRA, FDCPA, RESPA, TISA, and TILA.

## Sanchez & Amador

[sanchez-amador.com](http://sanchez-amador.com)

**Office Location** | Los Angeles, CA

**Firm Contact** | David Sanchez | [sanchez@sanchez-amador.com](mailto:sanchez@sanchez-amador.com)

### BRIEF DESCRIPTION OF experience

Our Banking & Finance Group has represented major financial institutions as lenders in commercial and private banking transactions for over 30 years. The firm also represents private equity funds and companies as borrowers. Our finance attorneys have served as in-house counsel for major banks and have practiced at some of the largest law firms in the nation.

## SRD Legal Group LLP

[srdlegallgroup.com](http://srdlegallgroup.com)

**Office Location** | Virtual Law Group

**Firm Contact** | Wabi Jain | [wjain@srdlegallgroup.com](mailto:wjain@srdlegallgroup.com)

### BRIEF DESCRIPTION OF experience

Our lawyers seamlessly deliver sustainable legal solutions that provide innovative outsourcing solutions and productivity savings for in-house legal teams. SRD operates a virtual platform and is women-owned and managed whose clients include Fortune 500 corporations to late-stage start-ups who derive unique value from SRD's flexible, efficient, and cost-effective approach.

## The Stark Firm, PLLC

[starkfirmpllc.com](http://starkfirmpllc.com)

**Office Location** | Atlanta, GA | Washington, DC | Philadelphia, PA | New York, NY  
Los Angeles, CA | Houston, TX | Miami, FL

**Firm Contact** | Erin Stark | [erinstark@starkfirmpllc.com](mailto:erinstark@starkfirmpllc.com) **CO-CHAIR**

### BRIEF DESCRIPTION

THE STARK FIRM is a practice that covers over 16 states with a focus solely on the representation of financial institutions. The founding partner has a deep expertise in banking, finance, lending, real estate transactions, bank regulatory, SBA services and creditor's rights which we have developed into a thriving firm supporting national and regional financial institutions.

## Walsh Pizzi O'Reilly Falanga LLP

[walsh.law](http://walsh.law)

**Office Locations** | Newark, NJ | New York, NY | Philadelphia, PA

**Firm Contact** | Stephen Falanga | [sfalanga@walsh.law](mailto:sfalanga@walsh.law)

### BRIEF DESCRIPTION

Walsh regularly negotiates and drafts loan documents and other complex financial instruments, perfecting liens, advising buyers and sellers in the purchase and sale of assets, and providing counsel in connection with all UCC-related issues including secured transactions, letters of credit, negotiable instruments, documents of title and warehousemen's liens.

## Wargo French Singer LLP

[wargofrench.com](http://wargofrench.com)

**Office Locations** | Atlanta, GA | Miami, FL | Los Angeles, CA

**Firm Contact** | Alina Singer | [asinger@wargofrench.com](mailto:asinger@wargofrench.com)

### BRIEF DESCRIPTION

We advise private and institutional lenders and borrowers through each phase of the commercial lending process and across various lending platforms. We have experience in structuring and negotiating middle market asset-based loan transactions, including multi-bank syndicated loans, term loans, committed revolving credit facilities, lines of credit, and financing.



## NAMWOLF | TRANSACTIONAL PRACTICE AREA COMMITTEE

### CORPORATE, M&A AND SECURITIES SUBCOMMITTEE

The members of the Corporate, M&A, and Securities Subcommittee of the Transactional Practice Area Committee specialize in sophisticated transactions involving corporations, limited liability companies, partnerships and other forms of business enterprises, including funds and B Corps. Its members bring a wealth of transactional experience relevant to all stages of the life cycle of a business from start-up through expansion to exit, including mergers and acquisitions, dispositions and related governance issues. The Subcommittee serves as a resource to NAMWOLF member firms, corporate partners, and in-house counsel.

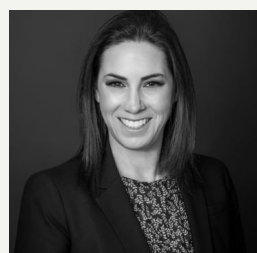
### Specific Areas of Expertise

- Mergers
- Stock sales and purchase
- Asset sales and purchases
- Sales of divisions, leveraged buyouts
- Restructurings
- Spin-offs
- Divestitures
- Joint ventures
- Strategic alliances
- Venture financing
- Corporate governance counselling
- Strategic business counselling
- Legal due diligence

### Corporate, M&A and Securities Subcommittee Co-Chairs:



Deborah Cochran  
Wong Fleming  
Partner  
[dcochran@wongfleming.com](mailto:dcochran@wongfleming.com)



Jessica Fairchild  
Croke Fairchild Duarte &  
Beres, LLC  
Partner  
[jfairchild@crokefairchild.com](mailto:jfairchild@crokefairchild.com)



## Acceleron Law Group, LLP

[acceleronlaw.com](http://acceleronlaw.com)

**Office Locations** | Silicon Valley, CA | Southern California | Atlanta, GA

**Firm Contact** | Fred Hasani | [fhasani@acceleronlaw.com](mailto:fhasani@acceleronlaw.com)

### BRIEF DESCRIPTION

Headquartered in Silicon Valley, Acceleron specializes in venture capital equity financings & M&A transactions, representing Fortune 500 strategic investors and acquirors, venture capital funds, and emerging growth company issuers. Acceleron attorneys also specialize in forming and representing venture funds, as well as representing fund investors and principals.

## Avila Rodriguez Hernandez Mena & Garro LLP

[avilalaw.com](http://avilalaw.com)

**Office Location** | Coral Gables, FL

**Firm Contact** | Asnardo Garro | [agarro@avilalaw.com](mailto:agarro@avilalaw.com)

### BRIEF DESCRIPTION

In a global economy, Avila's transactional attorneys find viable solutions to help multinational, international and domestic clients understand and minimize risk from contract negotiation through closing the deal and beyond. We represent investors and private and public companies in a variety of transactional and corporate matters in the U.S., Latin America, and Europe, including complex M&A transactions and asset sales.

## BurgherGray LLP

[burghergray.com](http://burghergray.com)

**Office Locations** | New York, NY | Washington, D.C. | Miami, Florida

**Firm Contact** | Sandra Honegan-Pounder | [spounder@burghergray.com](mailto:spounder@burghergray.com)

### BRIEF DESCRIPTION

BurgherGray attorneys have structured, negotiated and closed hundreds of mergers, stock and asset sales and purchases, leveraged buyouts, and other transactions involving changes in ownership and managerial control. We also advise clients in connection with recapitalizations and restructurings, including spin-offs, divestitures, joint ventures and strategic alliances.

## CM Law PLLC

[cm.law](http://cm.law)

**Office Locations** | Atlanta, GA | Austin, TX | Boston, MA | Chicago, IL | Dallas, TX  
Houston, TX | New York, NY | Philadelphia, PA | Washington, DC

**Firm Contact** | Ernest M. Stern | [estern@cm.law](mailto:estern@cm.law)

### BRIEF DESCRIPTION

Deals include: Asset sales; Stock sales acquisitive mergers; Reverse triangular mergers; "Cash-out" mergers; Leveraged buy-outs; Employee stock ownership plans acquisitions; Venture capital transactions; Joint ventures; Strategic alliances; Spin-offs, split-offs and split-ups; Recapitalizations; Cross-entity mergers; Proxy contests; Also advise on SEC compliance.

## Croke Fairchild Duarte & Beres LLC

[crokefairchild.com](http://crokefairchild.com)

**Office Locations** | Chicago, IL | Milwaukee, WI

**Firm Contact** | Jessica Fairchild | [jfairchild@crokefairchild.com](mailto:jfairchild@crokefairchild.com) **CO-CHAIR**

### BRIEF DESCRIPTION

Croke Fairchild brings decades of experience leading complex and cutting-edge M&A transactions. Our attorneys routinely represent both buyers and sellers in transactions that help define the future of their enterprises. We work with family offices, family businesses, fund sponsors and public companies across a range of industries on their most pivotal transactions.

## d'Arcambal Ousley & Cuyler Burk, LLP

[darcambal.com](http://darcambal.com)

**Office Location** | New York, NY | Parsippany, NJ | Philadelphia, PA

**Firm Contact** | Michael Braun | [mbraun@darcambal.com](mailto:mbraun@darcambal.com)

### BRIEF DESCRIPTION

The Firm represents Fortune 500 companies and government agencies. Our lawyers have previously practiced as partners in large corporate law firms and corporate legal departments. The Firm's expertise includes entity formation and documentation, corporate compliance, debt financings, structured financings, real estate finance and ERISA.

## The Delaware Counsel Group LLC

[decg.com](http://decg.com)

**Office Location** | Wilmington, DE

**Firm Contact** | Ellisa Opstbaum Habbart | [ehabbart@decg.com](mailto:ehabbart@decg.com)

### BRIEF DESCRIPTION

The Delaware Counsel Group (DCG) represents clients in complex national & international business transactions with a Delaware connection. DCG has handled substantial cross border work from countries around the world to provide Delaware-specific advice to its clients. Engagements have focused on acquisitions, joint ventures, equity investments, and secured financings.

## Flener IP & Business Law

[fleneriplaw.com](http://fleneriplaw.com)

**Office Location** | Chicago, IL

**Firm Contact** | Zareefa Flener | [zflener@fleneriplaw.com](mailto:zflener@fleneriplaw.com)

### BRIEF DESCRIPTION

Flener IP & Business Law is involved with what we term Corporate Intellectual Property which allows the firm to take a strategic and commercial approach to our clients' IP and technology including counseling, incorporation, licensing, contracts, raising capital, IPO, corporate due diligence, M&A, private equity, and finance.

## Goosmann Law Firm, PLC

[goosmannlaw.com](http://goosmannlaw.com)

**Office Location** | Sioux City, IA | Sioux Falls, SD | Omaha, NE | Spirit Lake, IA

**Firm Contact** | Aaron Adams | [adamsa@goosmannlaw.com](mailto:adamsa@goosmannlaw.com)

### BRIEF DESCRIPTION

Partner Aaron D. Adams provides guidance to corporate leaders, executives, and bankers, helping them navigate M&A and contractual disputes. Aaron's 20+ years of experience as in-house counsel with multiple organizations, including one of the country's leading credit card processors, has given him a comprehensive understanding of M&A from many different perspectives.

## Grant Austin, LLC

[grantlawllc.com](http://grantlawllc.com)

**Office Location** | Chicago, IL

**Firm Contact** | Maurice Grant | [mgrant@grantlawllc.com](mailto:mgrant@grantlawllc.com)

### BRIEF DESCRIPTION

Corporations of all sizes, in a broad range of industries, look to Grant Austin, LLC for a variety of legal services and casework, including drafting bylaws and resolutions, corporate counseling, review and drafting of legal contracts, sales of businesses and other related transactions, and representation in matters of banking, retailing, real estate and construction.

## Kang Haggerty

[khflaw.com](http://khflaw.com)

**Office Locations** | Philadelphia, PA | Marlton, NJ

**Firm Contact** | Jacklyn Fetbroyt | [jfetbroyt@khflaw.com](mailto:jfetbroyt@khflaw.com)

### BRIEF DESCRIPTION

KH's robust commercial transactions practice includes general corporate structuring and counseling, M&A with an emphasis on business acquisitions and sales with a real property component, and securities transactions under the guidance of our former SEC Division of Corporate Finance and Office of Disclosure Policy attorney.

## KPPB LAW

[kppblaw.com](http://kppblaw.com)

**Office Locations** | Atlanta, GA | New York, NY | Chicago, IL | Fairfax, VA | Fairfield, CT

**Firm Contact** | Sonjui L. Kumar | [skumar@kppblaw.com](mailto:skumar@kppblaw.com)

### BRIEF DESCRIPTION

KPPB LAW provides legal services related to corporate governance, mergers and acquisitions, securities law compliance and general corporate matters. Our corporate services support business owners, managers, investors and buyers through the life cycle of an enterprise including establishment of their corporate governance structure. Our M&A services include: Private Company Acquisitions and Sales, Acquisitions, Sales and Spin-Offs of Subsidiaries, Divisions and Other Assets, Joint Ventures, Formation and Operation of Strategic Alliances, Asset Sale Transactions, Management and Leveraged buyouts including cross-border transactions. Our Securities Law services include the drafting of private placement memorandums and handling of private equity investments and sales of equity.

## Lawrence Law

[lawrencelawllc.com](http://lawrencelawllc.com)

**Office Locations** | Baltimore, MD | New York, NY

**Firm Contact** | Jennifer Brennan | [jennifer@lawrencelawllc.com](mailto:jennifer@lawrencelawllc.com)

### BRIEF DESCRIPTION

Lawrence Law has decades of experience in the full array of corporate & business transactions, not limited to formations, acquisitions, mergers, dissolutions, buy-sells, private offerings, equity transactions, joint ventures, etc. We also advise and draft documents for on-going concerns involving all operational and corporate governance matters, and MBE/DBE.

## Love and Long, L.L.P.

[loveandlonglaw.com](http://loveandlonglaw.com)

**Office Locations** | New York, NY | Newark, NJ | Philadelphia, PA

**Firm Contact** | Lisa Love | [llove@loveandlonglaw.com](mailto:llove@loveandlonglaw.com)

### BRIEF DESCRIPTION

Love and Long represents corporations and public entities in connection with joint ventures, strategic alliances, venture financing, restructurings, mergers, stock sales and purchase, asset sales and purchases, divestitures, leveraged buyouts, corporate governance, and legal due diligence. Recently, the Firm represented a state insurance department in the antitrust review and analysis of the CVS-Caremark Aetna merger.

## Maxson Mago & Macaulay, LLP

[em3law.com](http://em3law.com)

**Office Locations** | Atlanta, GA | Chicago, IL | Dallas, TX | Fort Lauderdale, FL  
New York City, NY

**Firm Contact** | Ajay Mago | [amago@em3law.com](mailto:amago@em3law.com)

### BRIEF DESCRIPTION

Our experts specialize in intricate transactions, mergers, acquisitions, and governance, encompassing equity sales, asset sales, joint ventures, divestitures, and spinoffs. From startup to exit, we excel in offering comprehensive full-service support in the meticulous drafting and thorough review and negotiation of corporate transactions throughout a company's life cycle.

## MWH Law Group LLP

[mwhlawgroup.com](http://mwhlawgroup.com)

**Office Locations** | Chicago, IL | Indianapolis, IN | Milwaukee, WI | Madison, WI  
New York, NY | West Des Moines, IA

**Firm Contact** | Kerrie Murphy | [kerrie.murphy@mwhlawgroup.com](mailto:kerrie.murphy@mwhlawgroup.com)

### BRIEF DESCRIPTION

Our attorneys stand as trusted advisers and legal counsel for both private and public corporate entities. Representing Fortune 100 and Fortune 500 companies in a range of areas including commercial contracts, commercial lending, mergers and acquisitions, and general corporate governance, MWH fosters a cross-disciplinary, dynamic approach to diverse client issues.

## Novos Law LLP

[novoslawllp.com](http://novoslawllp.com)

**Office Locations** | Los Angeles, CA

**Firm Contact** | Tony Lee | [tlee@novoslawllp.com](mailto:tlee@novoslawllp.com)

### BRIEF DESCRIPTION

Novos Law specializes in corporate transactions, including mergers and acquisitions, partnerships, entity formation and structuring, equity and debt financing, and other commercial transactions.

## PAG Law

[pag.law](http://pag.law)

**Office Locations** | Miami, FL | New York, NY | Mexico City | Buenos Aires

**Firm Contact** | Zac Soto | [zac@pag.law](mailto:zac@pag.law)

### BRIEF DESCRIPTION

PAG Law is a boutique business law firm providing sophisticated corporate counsel to clients both domestically and internationally. Our attorneys have experience working with Fortune 500 companies in addition to mid-size, small and growth-stage businesses, as well as advising high net worth individuals regarding commercial contracts, deals and investor-related matters.

## Transcendent Law Group

[tlg.law](http://tlg.law)

**Office Locations** | New Orleans, LA

**Firm Contact** | Richard Montgomery | [rmontgomery@tlg.law](mailto:rmontgomery@tlg.law)

### BRIEF DESCRIPTION

Our litigation team handles various claims, including state wage laws, discrimination, and wrongful termination. We excel in state and federal courts, commercial litigation, and product liability. We represent large companies in contract and fraud disputes, and offer services like legal document preparation, mediations, and settlements.

## Wargo French Singer LLP

[wargofrench.com](http://wargofrench.com)

**Office Locations** | Atlanta, GA | Miami, FL | Los Angeles, CA

**Firm Contact** | Alina Singer | [asinger@wargofrench.com](mailto:asinger@wargofrench.com)

### BRIEF DESCRIPTION

Wargo French Singer advises entities, including corporations, nonprofit corporations, joint ventures, limited liability companies, sole proprietorships, partnerships and other business associations, on general corporate and partnership issues, complex business transactions, mergers & acquisitions, and strategic business combinations.

## Wong Fleming

[wongfleming.com](http://wongfleming.com)

**Office Locations** | Seattle, WA | Redmond, WA | San Diego, CA | Houston, TX  
Princeton, NJ | Atlanta, GA

**Firm Contact** | Deborah Cochran | [dcochran@wongfleming.com](mailto:dcochran@wongfleming.com) **CO-CHAIR**



## NAMWOLF | TRANSACTIONAL PRACTICE AREA COMMITTEE

### REAL ESTATE SUBCOMMITTEE

The Real Estate Subcommittee consists of experienced real estate lawyers from member firms across the country. Our members handle sophisticated transactions for companies and financial institutions with office, commercial, retail, industrial, warehouse, mixed use projects and other assets for development, acquisition, disposition, financing, and leasing. The experience base of our members is broad and includes providing clients with creative solutions in the areas of land use, construction, debt and equity financing, EB-5 financing, eminent domain, and redevelopment.

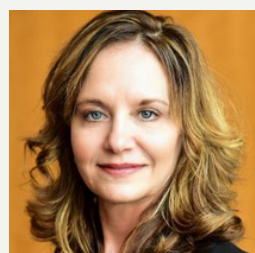
### Specific Areas of Expertise

- Acquisitions
- Dispositions
- Land Use and Zoning
- Commercial Development
- Construction
- Leasing
- Debt and Equity Financing
- EB-5 Financing
- Redevelopment
- Environmental

### Real Estate Subcommittee Co-Chairs:



**Aaron Espinoza**  
Hughes Watters Askanase  
Associate  
[ajespinoza@hwa.com](mailto:ajespinoza@hwa.com)



**Sharon Lewonski**  
CM Law PLLC  
Partner  
[slewonski@cm.law](mailto:slewonski@cm.law)



## Avila Rodriguez Hernandez Mena & Garro LLP

[avilalaw.com](http://avilalaw.com)

**Office Location** | Coral Gables, FL

**Firm Contact** | Maggie Barreto-Tercilla | [mbarreto@avilalaw.com](mailto:mbarreto@avilalaw.com)

### BRIEF DESCRIPTION

Avila's real estate attorneys represent clients at the local, national and international level in commercial real estate matters including acquisitions, construction contracts, dispositions, financings, leasing, loan purchases and sales, servicing, workouts and other real estate and capital market related matters. We are accustomed to representing clients in complex transactions with tight timeframes.

## Croke Fairchild Duarte & Beres LLC

[crokefairchild.com](http://crokefairchild.com)

**Office Locations** | Chicago, IL | Milwaukee, WI

**Firm Contact** | Jessica Fairchild | [jfairchild@crokefairchild.com](mailto:jfairchild@crokefairchild.com)

### BRIEF DESCRIPTION

Croke Fairchild helps clients harness the potential of real estate in some of the nation's largest and most important markets. Croke Fairchild represents real estate developers, strategic investors, emerging businesses, family offices, and individuals on a variety of real estate transactions throughout the country.

## CM Law PLLC

[cm.law](http://cm.law)

**Office Locations** | Atlanta, GA | Austin, TX | Boston, MA | Chicago, IL | Dallas, TX | Houston, TX | New York, NY | Philadelphia, PA | Washington, DC

**Firm Contact** | Sharon M. Lewonski | [slewonski@cm.law](mailto:slewonski@cm.law) **CO-CHAIR**

### BRIEF DESCRIPTION

We provide legal and practical business advice to stakeholders on all types of real property transactions, disputes and projects in a wide array of industries and asset classes, including multifamily, mixed use, office, food & beverage, retail (e-commerce and traditional), life sciences and healthcare, education, hospitality, automotive, industrial and manufacturing.

## d'Arcambal Ousley & Cuyler Burk, LLP

[darcambal.com](http://darcambal.com)

**Office Location** | New York, NY | Parsippany, NJ | Philadelphia, PA

**Firm Contact** | Michelle d'Arcambal | [mdarcambal@darcambal.com](mailto:mdarcambal@darcambal.com)

### BRIEF DESCRIPTION

Our lawyers previously practiced as partners in large corporate law firms and corporate legal departments. The Firm represents borrowers/ lenders in all types of residential and commercial real estate matters, including loan workouts and foreclosures. The Firm advises clients regarding Federal and state compliance and regulatory issues and litigates real estate matters.

## DTOLAW

[dtolaw.com](http://dtolaw.com)

**Office Locations** | Los Angeles, CA | San Francisco, CA

**Firm Contact** | Marcos "Mark" Tarango | [mtarango@dtolaw.com](mailto:mtarango@dtolaw.com)

## Goosmann Law Firm, PLC

[goosmannlaw.com](http://goosmannlaw.com)

**Office Locations** | Sioux City, IA | Sioux Falls, SD | Omaha, NE

**Firm Contact** | Andrew Simpson | [simpsona@goosmannlaw.com](mailto:simpsona@goosmannlaw.com)

### BRIEF DESCRIPTION

Omaha Managing Partner Andy Simpson has 17+ years of experience counseling corporate clients in real estate transactions including land purchase, development, joint venture, entitlement, and subdivision agreements. He also has vast knowledge of infrastructure, TIFs, SIDs, financing primary and mezzanine agreements, due diligence, and title dispute resolution.

## Grant Austin, LLC

[grantlawllc.com](http://grantlawllc.com)

**Office Location** | Chicago, IL

**Firm Contact** | Maurice Grant | [mgrant@grantlawllc.com](mailto:mgrant@grantlawllc.com)

### BRIEF DESCRIPTION

Grant Austin, LLC leverages its extensive experience in handling real estate matters for developers, investors, lenders and other businesses. We provide a full range of real estate services, including dispositions and acquisitions, mortgage and construction financing and leasing. Our expertise in all areas of commercial lending includes experience in banking law, lending, leasing, structured finance, and project finance and securitizations.

## Hughes Watters Askanase

[hwa.com](http://hwa.com)

**Office Locations** | Houston, TX

**Firm Contact** | Aaron Espinoza | [ajespinoza@hwa.com](mailto:ajespinoza@hwa.com) **CO-CHAIR**

## Johnson, Blumberg & Associates

[johnsonblumberg.com](http://johnsonblumberg.com)

**Office Locations** | Chicago, IL | Milwaukee, WI | Merrillville, IN | Kalamazoo, MI |

Des Moines, IA | MN

**Firm Contact** | Ken Johnson | [ken@johnsonblumberg.com](mailto:ken@johnsonblumberg.com)

### BRIEF DESCRIPTION

We have extensive experience representing landlords and court-appointed receivers in foreclosure, litigation, eviction, loan workout, collection and bankruptcy matters. Our in-house REO Department negotiates terms with the buyer, clear exceptions from title, comply with all municipal requirements, full closing documentation, and ensure that proceeds are promptly received.

## Kang Haggerty

[khflaw.com](http://khflaw.com)

**Office Locations** | Philadelphia, PA | Marlton, NJ

**Firm Contact** | Jacklyn Fetbroyt | [jfetbroyt@khflaw.com](mailto:jfetbroyt@khflaw.com)

### BRIEF DESCRIPTION

KHF has considerable experience closing real estate deals for owners, developers, lenders, homebuilders, landlords and tenants. KHF coordinates the parties and consummates the deal, including acquisition, renovation, leasing, debt and equity financing, land use and zoning regulations, mortgage loan workout, and disposition of distressed assets.

## KPPB LAW

[kppblaw.com](http://kppblaw.com)

**Office Locations** | Atlanta, GA | New York, NY | Chicago, IL | Fairfax, VA | Fairfield, CT

**Firm Contact** | Kirtan Patel | [kpatel@kppblaw.com](mailto:kpatel@kppblaw.com)

### BRIEF DESCRIPTION

KPPB Law's real estate and secured lending attorneys have extensive knowledge and experience in a wide range of real estate issues. We regularly represent commercial clients on acquisitions, sales, construction, leasing, and other land use matters.

## Lawrence Law

[lawrencelawllc.com](http://lawrencelawllc.com)

**Office Locations** | Baltimore, MD | New York, NY

**Firm Contact** | Jennifer Brennan | [jennifer@lawrencelawllc.com](mailto:jennifer@lawrencelawllc.com)

### BRIEF DESCRIPTION

Lawrence Law handles transactional and litigation real estate matters, representing owners, developers, builders, property managers, local, regional & national landlords, and tenants. Some focus areas are: investment portfolios, acquisitions/sales, land and property development, due diligence, title issues, leasing, construction and mechanic's liens, zoning/use, contracts.

## Love and Long, L.L.P.

[loveandlonglaw.com](http://loveandlonglaw.com)

**Office Locations** | New York, NY | Newark, NJ | Philadelphia, PA | Washington, D.C.

**Firm Contact** | Reginald Long | [rlong@loveandlonglaw.com](mailto:rlong@loveandlonglaw.com)

### BRIEF DESCRIPTION

Our real estate practice includes transactions involving the acquisition, development, financing, leasing, disposition and restructuring of multifamily, office, retail, industrial, mixed-use and hospitality projects. We represent developers, public agencies, lenders, insurance companies, community development corporations, cooperative associations, lenders, pension funds and other entities in varied real estate projects with the experience to structure highly complex and complicated real estate transactions. Recently, the Firm negotiated the operating lease for the Jacob Javit Center in New York.

## Maxson Mago & Macaulay, LLP

[em3law.com](http://em3law.com)

**Office Locations** | Atlanta, GA | Chicago, IL | Dallas, TX | Fort Lauderdale, FL  
New York City, NY

**Firm Contact** | Ajay Mago | [amago@em3law.com](mailto:amago@em3law.com)

### BRIEF DESCRIPTION

Our team handles sophisticated transactions, providing comprehensive legal support to a wide variety of clients, including developers, lenders, investors, landlords, tenants, in development, acquisition, disposition, financing, and leasing of diverse assets. We bring creative solutions to challenges in land use, construction, eminent domain, and redevelopment.

## MWH Law Group LLP

[mwhlawgroup.com](http://mwhlawgroup.com)

**Office Locations** | Milwaukee, WI | Indianapolis, IN | Chicago, IL  
West Des Moines, IA

**Firm Contact** | Kerrie Murphy | [kerrie.murphy@mwhlawgroup.com](mailto:kerrie.murphy@mwhlawgroup.com)

### BRIEF DESCRIPTION

From single-property deals to complex multi-site ventures, MWH attorneys navigate acquisitions, dispositions, leasing, and commercial development with finesse. Clients include Fortune 100/500® corporations, developers, government entities, and financial institutions. We cover complex commercial leasing, development financing, land use & zoning, and tax-deferred exchanges.

## Sanchez & Amador, LLP

[sanchez-amador.com](http://sanchez-amador.com)

**Office Location** | Los Angeles, CA

**Firm Contact** | David Sanchez | [sanchez@sanchez-amador.com](mailto:sanchez@sanchez-amador.com)

### BRIEF DESCRIPTION

Our Banking and Finance attorneys represent lenders in all phases of commercial real estate financing transactions -- from loan originations and modifications to workouts, restructuring and lender liability avoidance. The firm leverages Big Law talent with valuable "in-house legal" perspective to deliver quality work product and business-sensitive legal advice to clients.

## Sapientia Law Group, PLLC

[sapientialaw.com](http://sapientialaw.com)

**Office Location** | Minneapolis, MN

**Firm Contact** | Towle Neu | [towlen@sapientialaw.com](mailto:towlen@sapientialaw.com)

### BRIEF DESCRIPTION

Whether purchasing, selling, building, lending, leasing, or managing, Sapientia navigates the legal maze of real estate transactions so its clients can focus on the deal. With flexible alternative fee arrangements, Sapientia's attorneys and clients work together cost-effectively on transactions involving office, retail, industrial, residential, and multi-tenant properties.

## The Stark Firm, PLLC

[starkfirmpllc.com](http://starkfirmpllc.com)

**Office Locations** | Atlanta, GA | Miami, FL | Washington, DC | Philadelphia, PA  
New York, NY | Houston, TX | Los Angeles, CA

**Firm Contact** | Erin Stark | [erinstark@starkfirmpllc.com](mailto:erinstark@starkfirmpllc.com)

### BRIEF DESCRIPTION

With offices in major business centers in the United States, Stark is a national practice with a focus on the representation of financial institutions. Stark offers a cradle-to-grave service that unifies all components--lending (secured or unsecured), leases, collection, litigation, land use, bankruptcy, foreclosure, regulatory advice, workouts, corporate property.

## Walsh Pizzi O'Reilly Falanga LLP

[walsh.law](http://walsh.law)

**Office Locations** | Newark, NJ | New York, NY | Philadelphia, PA

**Firm Contact** | Stephen Falanga | [sfalanga@walsh.law](mailto:sfalanga@walsh.law)

### BRIEF DESCRIPTION

Walsh is experienced representing buyers, sellers and lenders in connection with the purchase, sale and financing of commercial real estate transactions and asset sales from inception through due diligence and closing. We also represent lessors and lessees in connection with the negotiation and documentation of complex commercial leasing transactions and related issues.

## Wargo French Singer

[wargofrench.com](http://wargofrench.com)

**Office Locations** | Atlanta, GA | Miami, FL | Los Angeles, CA

**Firm Contact** | Alina Singer | [asinger@wargofrench.com](mailto:asinger@wargofrench.com)

### BRIEF DESCRIPTION

Our attorneys have extensive experience advising clients with respect to a broad range of commercial real estate and construction transactions throughout the U.S. Such transactions include the planning, acquisition, disposition, leasing, financing, construction and development of various retail, industrial, office, hotel, multi-family housing and mixed-use projects.

# NAMWOLF | TRANSACTIONAL PRACTICE AREA COMMITTEE

## TAX SUBCOMMITTEE

The **Tax Subcommittee** of the Transactional Practice Area Committee is comprised of seasoned and experienced tax attorneys whose broad range of experience spans from providing tax advice on M&A transactions, advising on tax aspects of cross-border transactions to representing clients in federal courts on tax related disputes. The Tax Subcommittee is a resource for the Transactional Practice Area Committee's other Subcommittees as they can draw on our members to provide them with tax guidance on specific matters. The Tax Subcommittee seeks to leverage the collective experience of its members to promote information exchange and professional development among NAMWOLF member firms, corporate partners and in-house counsels.

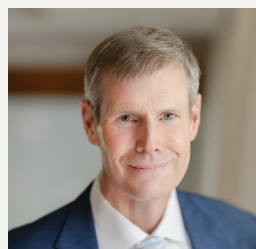
## Specific Areas of Expertise

- GILTI and FDII
- Income Tax Compliance and Planning for IRA's and 401(k)'s
- Tax Considerations in Cross Border Loans and ISDA Transactions
- Tax Considerations in M&A Transactions
- Foreign Investment in US Real Estate
- Pre-immigration Tax Planning
- Foreign Investments In US Tax Structuring
- Cross-border Tax Planning
- Structuring of Financing and Investment SPVs
- Phantom Income Avoidance
- State and Local Tax Matters
- Tax Exempt Organizations
- Business Tax Compliance
- Tax Controversies
- Partnership Taxation
- Choice of Entity Considerations
- Tax Structuring Considerations for Alternative Investment Vehicles

## Tax Subcommittee Co-Chairs



**Augusto Egoavil**  
BurgherGray LLP  
Senior Attorney  
[aegoavil@burghergray.com](mailto:aegoavil@burghergray.com)



**Fred Parker**  
Gardner Skelton  
Chief Operating Officer  
[fred@gardnerskelton.com](mailto:fred@gardnerskelton.com)



### BurgherGray LLP

[burghergray.com](http://burghergray.com)

**Office Locations** | New York, NY | Washington, D.C. | Chicago, IL | Miami, FL

**Firm Contact** | Augusto Egoavil | [aegoavil@burghergray.com](mailto:aegoavil@burghergray.com) **CO-CHAIR**

#### BRIEF DESCRIPTION

BurgherGray's tax practice includes Corporate tax services on domestic and cross-border transactions; Corporate tax services on start-up structuring, M&A and other divestitures; Services regarding taxation of securitization programs and financing schemes; Tax, trust and estate planning and advice for HNI and foreign individuals.

### Drohan Lee LLP

[dlkny.com](http://dlkny.com)

**Office Location** | New York, NY

**Firm Contact** | Jae W. Lee | [jlee@dlkny.com](mailto:jlee@dlkny.com)

#### BRIEF DESCRIPTION

Jae W. Lee graduated with honors from Dartmouth College in 1991, Fordham University School of Law in 1996 and New York University School of Law with a Master of Laws in Taxation in 1997. Mr. Lee's practice includes advising on tax aspects of corporate and partnership structuring, mergers and acquisition, cross-border transactions and private offerings. In addition, Mr. Lee heads the firm's public finance practice which includes representation of municipal bond issuers and underwriters.

### Croke Fairchild Duarte & Beres LLC

[crokefairchild.com](http://crokefairchild.com)

**Office Locations** | Chicago, IL | Milwaukee, WI

**Firm Contact** | Jessica Fairchild | [jfairchild@crokefairchild.com](mailto:jfairchild@crokefairchild.com)

#### BRIEF DESCRIPTION

Croke Fairchild represents clients in a variety of business and tax matters. We develop and implement creative yet pragmatic tax-sensitive strategies and solutions for complex mergers, sales and acquisitions, joint ventures, cross-border transactions, reorganizations, fund formations, sponsor led private equity financing rounds, and real estate transactions.

### Gardner Skelton PLLC

[gardnerskelton.com](http://gardnerskelton.com)

**Office Location** | Charlotte, NC

**Firm Contact** | Fred Parker | [fred@gardnerskelton.com](mailto:fred@gardnerskelton.com) **CO-CHAIR**

#### BRIEF DESCRIPTION

Fred Parker advises businesses and individuals in matters involving federal, state, and local taxation and related corporate transactions. He earned his Masters of Law in Taxation from Georgetown University Law Center and has a background in business litigation. This experience allows Fred to offer a unique perspective to his clients in order to analyze available options and achieve better outcomes.

### Moore & Associates

[kteyamoore.com](http://kteyamoore.com)

**Office Location** | Bowie, MD

**Firm Contact** | K. "Teya" Moore | [kkm@kteyamoore.com](mailto:kkm@kteyamoore.com)

#### BRIEF DESCRIPTION

K. "Teya" Moore is a transactional attorney with a law degree from New York University and a LL.M. (master's in taxation) from Georgetown University Law Center. He has extensive experience in developing and closing complex business transactions, including tax deferred reorganizations or mergers and acquisitions, stock and asset acquisitions. He also has significant experience in structuring or providing counsel to regarding sophisticated real estate ownership arrangements for owners and developers, institutional investors, funds and commercial lenders. He is currently managing an asset sale valued at over 1.2 billion and serves as legal counsel to the fund selling the asset to international investors.



NAMWOLF

## TRANSACTIONAL PRACTICE AREA COMMITTEE

### TECHNOLOGY SUBCOMMITTEE

The Technology Subcommittee comprises member firms that specialize in a full range of technology-focused legal services. Our practices encompass complex transactions, advanced technologies, data privacy, cybersecurity, information technology, enterprise technology, intellectual property, artificial intelligence (AI), Internet of things (IoT) and other technology-based services and related intellectual property issues. Members include lawyers that have held leadership positions within AmLaw 100 firms and Fortune 100 companies, and who are leading transactions that impact over 11 figures in annual operating revenues. Clients served by our member firms range from start-ups to Fortune 100 to Global Fortune 500 companies.

## Specific Areas of Expertise

### Advanced Technology

- Artificial Intelligence (AI)
- Blockchain
- Cryptocurrency
- Data Analytics and Mining
- Fintech & Legaltech
- IoT (Internet of Things)
- Smart Contracts

### Complex Transactions

- Asset Transfers
- Data Center Co-Locations
- Outsourcing, On-Shoring, Near-Shoring & Offshoring
- Transfer Pricing

### Cybersecurity, Data

### Protection & Privacy

- EU GDPR and other Global Privacy
- PCI DSS (Payment Card Industry Data Security Standards)
- State and Federal Privacy Requirements
- Vendor and Partnership Security Management

### Enterprise Technology

- Cloud/SaaS/PaaS
- Enterprise Resource Platforms (ERP)
- Open Source
- Software Licensing
- Vendor Sourcing Best Practices & Templates

### Intellectual Property

- Licensing & Royalty Programs
- Software and Business Method Patents

### IT-Related Corporate Requirements

- Audits, Compliance and Risk Management
- Government Relations
- Litigation
- Policies & Procedures
- New Media
- e-Commerce
- Gamification
- Social Networks
- Virtual & Augmented Reality

### Telecommunications

## Technology Subcommittee Co-Chairs:



**Ramina Dehkhoda-Steele**  
Wong Fleming  
Partner  
[rdehkhoda@wongfleming.com](mailto:rdehkhoda@wongfleming.com)



**Joan Lebow**  
Maxson Mago & Macaulay, LLP  
Partner  
[jlebow@em3law.com](mailto:jlebow@em3law.com)



---

## Acceleron Law Group, LLP

[acceleronlaw.com](http://acceleronlaw.com)

**Office Locations** | Silicon Valley, CA | Southern California | Atlanta, GA

**Firm Contact** | Fred Hasani | [fhasani@acceleronlaw.com](mailto:fhasani@acceleronlaw.com)

### BRIEF DESCRIPTION

The firm represents Fortune 500 companies in connection with technology transactions, including data and software (SaaS) licensing agreements, with deep expertise in working with supply chain management and procurement departments. Our attorneys previously served as in-house counsel to high profile technology companies and as outside counsel at national law firms.

---

## BurgherGray LLP

[burghergray.com](http://burghergray.com)

**Office Locations** | New York, NY | Washington, D.C. | Miami, FL

**Firm Contact** | Jephthe Lanthia | [jlantia@burghergray.com](mailto:jlantia@burghergray.com)

### BRIEF DESCRIPTION

With experience in various traditional and advanced technologies (e.g., fintech, blockchain, privacy and cybersecurity), our agile and adaptive Technology & IP Group is well equipped to help our clients stay abreast of ongoing technology and IP legal developments and best practices and identify and evaluate implications for their compliance programs, risk management strategies and other business functions.

---

## CM Law PLLC

[cm.law](http://cm.law)

**Office Locations** | Atlanta, GA | Austin, TX | Boston, MA | Chicago, IL | Dallas, TX | Houston, TX | New York, NY | Philadelphia, PA | Washington, DC | Wilmington, DE

**Firm Contact** | Heather Haughian | [hhaughian@cm.law](mailto:hhaughian@cm.law)

### BRIEF DESCRIPTION

Technology development, consulting and services agreements; Software licensing and maintenance agreements; Hardware procurement and leasing; Evaluation (beta) licenses; Software as a Service (SaaS) licensing models and agreements; Outsourcing transactions; Hosting, Colocation and Data Center Services agreements; Internet and eCommerce offerings; Privacy and data security.

---

## Croke Fairchild Duarte & Beres LLC

[crokefairchild.com](http://crokefairchild.com)

**Office Locations** | Chicago, IL | Milwaukee, WI

**Firm Contact** | Cameron Robinson | [crobison@crokefairchild.com](mailto:crobison@crokefairchild.com)

### BRIEF DESCRIPTION

From development, acquisition, licensing, sale and monetization of intellectual property and technology assets to compliance with privacy obligations, Croke Fairchild attorneys have significant experience advising clients ranging from startups to multinational corporations on intellectual property, data privacy and technology matters.

---

## DTO Law

[dtolaw.com](http://dtolaw.com)

**Office Locations** | Los Angeles, CA | Silicon Valley, CA | New York, NY

**Firm Contact** | Marcos "Mark" Tarango | [mtarango@dtolaw.com](mailto:mtarango@dtolaw.com)

### BRIEF DESCRIPTION

DTO Law can provide both large and small companies with innovative and scalable legal solutions and advisory services for technology-related transactions. We have assisted Fortune 500 and Fortune Global 500 executives and legal counsel with the structuring, negotiation, execution, and modification of transactions for technology matters. Our services include software licensing, asset purchases and sales, supply agreements, and business process outsourcing, among other areas. The firm's attorneys have previously worked at some of the largest and most respected law firms in the country and are able to deliver exceptional, client-focused results.

---

## Goosmann Law Firm, PLC

[goosmannlaw.com](http://goosmannlaw.com)

**Office Locations** | Omaha, NE | Sioux City, IA | Sioux Falls, SD | Spirit Lake, IA

**Firm Contact** | Barry Sackett | [sackettb@goosmannlaw.com](mailto:sackettb@goosmannlaw.com)

### BRIEF DESCRIPTION

Goosmann Law Firm has an active transaction area and are currently part of the Trans Pac, including Barry Sackett and Kelly Turner. Barry is active in the digital asset and blockchain space and desires to join this sub committee as areas here continue to develop.

---

## KPPB LAW

[kppblaw.com](http://kppblaw.com)

**Office Locations** | Atlanta, GA | New York, NY | Chicago, IL | Fairfax, VA | Fairfield, CT

**Firm Contact** | Sonjui L. Kumar | [skumar@kppblaw.com](mailto:skumar@kppblaw.com)

### BRIEF DESCRIPTION

KPPB Law's technology practice includes the representation of our clients with respect to their technology contracts including drafting and negotiation of licensing and service agreements.

---

## Maxson Mago & Macaulay, LLP

[em3law.com](http://em3law.com)

**Office Locations** | Atlanta, GA | Austin, TX | Chicago, IL | Dallas, TX | New York City, NY

**Firm Contact** | Ajay Mago | [amago@em3law.com](mailto:amago@em3law.com) **CO-CHAIR**

### BRIEF DESCRIPTION

EM<sup>3</sup> attorneys excel in collaborating with client teams to maximize outcomes for complex intellectual property contracts, strategic partnerships, and joint ventures. We handle agreements for software, hardware, and data processing, addressing client risks. Our expertise includes AI, outsourcing, data privacy, cybersecurity, and intellectual property ownership issues.

---

## MWH Law Group LLP

[mwhlawgroup.com](http://mwhlawgroup.com)

**Office Locations** | Milwaukee, WI | Indianapolis, IN | Chicago, IL | Madison, WI | West Des Moines, IA

**Firm Contact** | Kerrie Murphy | [kerrie.murphy@mwhlawgroup.com](mailto:kerrie.murphy@mwhlawgroup.com)

### BRIEF DESCRIPTION

With over 70 years of collective experience, our attorneys favor a team approach to resolving issues, crafting contract processes, and negotiating agreements. We expertly handle the creation, licensing and use of proprietary and open-source software, mobile apps, websites, social media, digital content/advertising, SaaS/PaaS/IaaS/cloud arrangements, e-Commerce, and more.

---

## Peacock Law P.C.

[peacocklaw.com](http://peacocklaw.com)

**Office Locations** | Albuquerque, NM | New York, NY

**Firm Contact** | Justin Muehlmeier | [jrm@peacocklaw.com](mailto:jrm@peacocklaw.com)

### BRIEF DESCRIPTION

As a full-service Intellectual Property law firm, we have, for over thirty years, assisted companies big and small generate value from their great ideas. Having negotiated and drafted thousands of complex technology and IP transactions, we know how to build lasting and profitable business relationships for our clients.



### Sanchez & Amador, LLP

[sanchez-amador.com](http://sanchez-amador.com)

**Office Location** | Los Angeles, CA

**Firm Contact** | Marco Zambrano | [zambrano@sanchez-amador.com](mailto:zambrano@sanchez-amador.com)

#### BRIEF DESCRIPTION

Attorneys in our Technology Transaction practice group bring a combination of technical knowledge, business acumen, and significant experience. We represent both buyers and sellers of technology. Representative practice areas include Outsourcing, Software as a Service (SaaS), Cloud Services, Privacy and Cybersecurity matters, including statements and policies.

### SRD Legal Group LLP

[srdlegallgroup.com](http://srdlegallgroup.com)

**Office Location** | Virtual Law Firm

**Firm Contact** | Atif Islam | [aislam@srdlegallgroup.com](mailto:aislam@srdlegallgroup.com)

#### BRIEF DESCRIPTION

SRD reviews and negotiates, in collaboration with in-house teams, a broad range of vendor agreements that includes technology, licensing and development, outsourcing (BPO and ITO), SaaS, consulting and professional services, distribution and strategic partnership agreements, technology sale and purchase agreements, market data agreements and other commercial contracts.

### Walsh Pizzi O'Reilly Falanga LLP

[walsh.law](http://walsh.law)

**Office Locations** | Newark, NJ | New York, NY | Philadelphia, PA

**Firm Contact** | Peter Pizzi | [ppizzi@walsh.law](mailto:ppizzi@walsh.law)

#### BRIEF DESCRIPTION

We assist in preparing terms and conditions for web-based businesses and mobile apps, including e-commerce and gaming apps, and advise on data breach preparedness and best practices. We also handle matters at the intersection of data and privacy and other fields of law, such as employment and protection of corporate IP, trade secrets and other proprietary information.

### Wargo French Singer

[wargofrench.com](http://wargofrench.com)

**Office Locations** | Atlanta, GA | Miami, FL | Los Angeles, CA

**Firm Contact** | Alina Singer | [asinger@wargofrench.com](mailto:asinger@wargofrench.com)

#### BRIEF DESCRIPTION

We advise national and international companies regarding complex business transactions, technology and IP acquisition and licensing, data privacy and security, compliance and risk management, and strategic business issues. We work with clients across industries regarding new and emerging technology and expansion into new markets, distribution channels and product lines.

### Wong Fleming

[wongfleming.com](http://wongfleming.com)

**Office Locations** | Seattle, WA | Redmond, WA | San Diego, CA | Houston, TX

Princeton, NJ | Atlanta, GA

**Firm Contact** | Ramina Dehkoda-Steele | [rdehkoda@wongfleming.com](mailto:rdehkoda@wongfleming.com)

#### CO-CHAIR

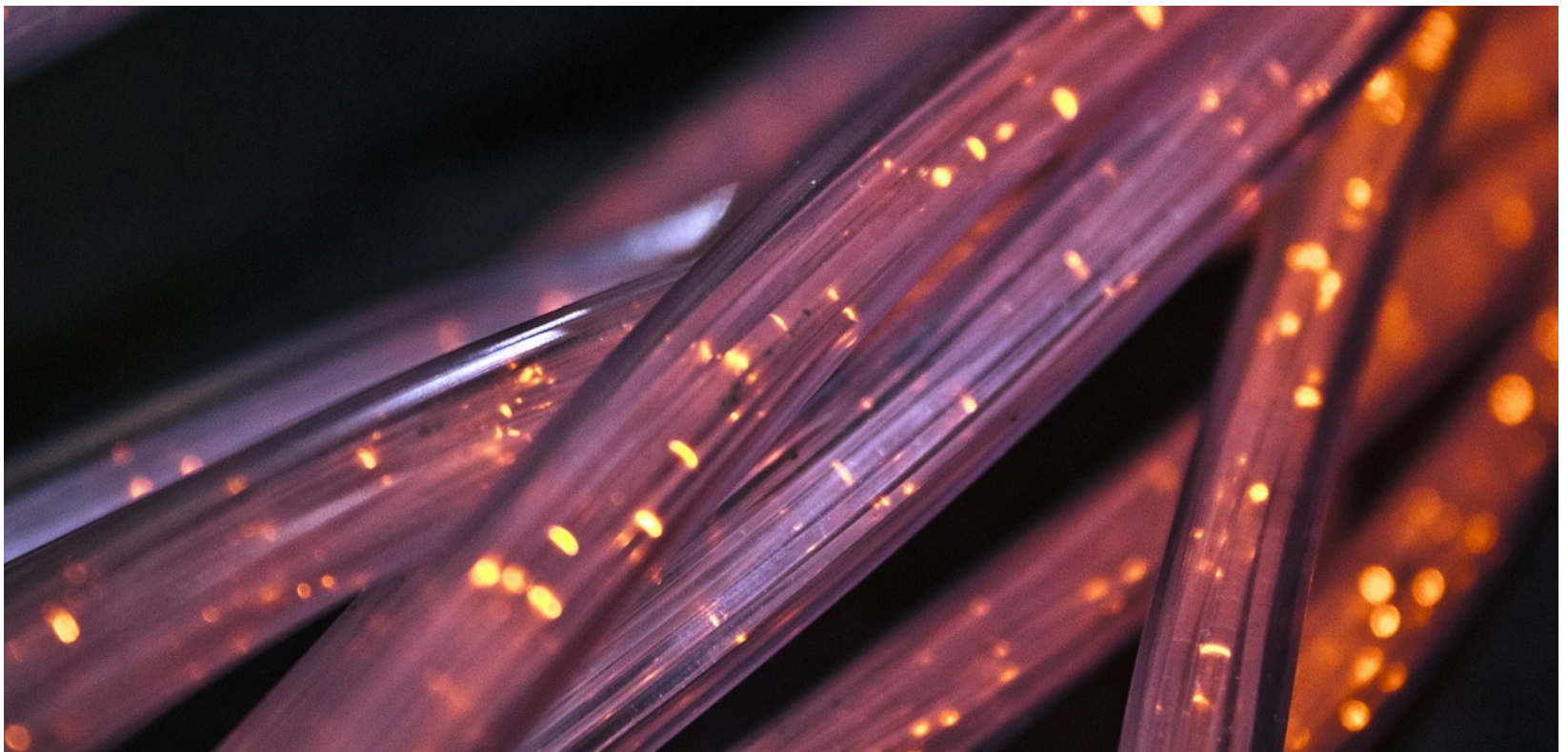
#### BRIEF DESCRIPTION

The transactional group provides comprehensive transactional and technical expertise on matters including master services agreements, data licenses, cloud computing, SAAS agreements, liability clauses privacy, and maintenance agreements. We have assisted technological companies, public and privately held companies. Our attorneys provide knowledge intensive solutions and service to companies looking for help with negotiations, agreements, and licensing. The attorneys in our Transactional Group have represented Fortune 500 companies in transactional and technology matters.

### Zuber Lawler

[zuberlawler.com](http://zuberlawler.com)

**Office Locations** | Chicago, IL | Columbus, OH | Denver, CO | Los Angeles, CA  
New York, NY | Phoenix, AZ | Seattle, WA



The background of the entire page is a solid orange color. Overlaid on this is a faint, semi-transparent image of a laptop. On the laptop's screen, there is a world map with a network of white lines and dots connecting various points across the globe, suggesting a global or digital theme.

NAMWOLF

TRANSACTIONAL  
PRACTICE AREA COMMITTEE

[namwolf.org/practice-area-committee/pac-transactional](http://namwolf.org/practice-area-committee/pac-transactional)