

NAMWOLF

TRANSACTIONAL

PRACTICE AREA COMMITTEE



NAMWOLF

ABOUT THE TRANSACTIONAL PAC

From incorporation to divestiture, and at every transition along the way, businesses demand precise and reliable transactional legal services to optimize their goals and maximize their value. The highly skilled and pre-screened minority and women owned law firms of the NAMWOLF Transactional Practice Area Committee have deep experience in the full breadth of transactional law disciplines. Through the Transactional Practice Area Committee, NAMWOLF strives to facilitate opportunities for major companies and NAMWOLF member firms to develop mutually beneficial partnerships to meet the transactional legal needs of NAMWOLF member corporations and promote diversity in the profession

BANKING & FINANCE

The Banking and Finance Subcommittee serves as an informational resource and relationship bridge between its members and businesses in the banking and finance industries. Our members are talented lawyers with experience in a wide array of domestic and international banking and finance transactions and regulatory matters. The Subcommittee seeks to leverage the collective experience of its members to promote information exchange and professional development among NAMWOLF member firms, corporate partners and in-house counsels.

CORPORATE, M&A, & SECURITIES

The Corporate, M&A & Securities Subcommittee serves as a vehicle to build relationships between its members and businesses with needs in the practice areas encompassed by the Subcommittee. Our members are talented NAMWOLF firms and lawyers who specialize in a wide array of domestic and international corporate, M&A and securities transactions and who possess a wealth of experience in such practice areas. Through the sharing of the collective experience of its members, the Subcommittee seeks to increase the knowledge and expertise of other NAMWOLF member firms, corporate partners and in-house counsels.

IMMIGRATION

The Immigration Subcommittee is a network of minority and women-owned firms that specialize in providing high-quality immigration services. Our goal is to build mutually beneficial relationships between our members and businesses with immigration needs. Our members are talented and experienced NAMWOLF firms and lawyers who share and promote the depth of knowledge and expertise with other NAMWOLF members, their partners and in-house counsel. They are dedicated to highest quality services for employers and their employees, cost effective assistance, and compliance solutions.

Our firms are capable of serving clients in all states and numerous languages.

REAL ESTATE

The Real Estate Subcommittee consists of experienced real estate lawyers from member firms across the country. Our members handle sophisticated transactions for companies and financial institutions with office, commercial, retail, industrial, warehouse, mixed use projects and other assets for development, acquisition, disposition, financing, and leasing. The experience base of our members is broad and includes providing clients with creative solutions in the areas of land use, construction, debt and equity financing, EB-5 financing, eminent domain, and redevelopment.

TAX

The Tax Subcommittee member firms have helped numerous clients of all sizes navigate difficult tax issues. The range of matters handled by firms extends to tax-free spin-offs, tax-exempt entity restructurings, and complex capital matters arising in joint ventures. Attorneys at firms include LLM credentialed tax attorneys and specialists with considerable experience in seeking guidance and rulings from the IRS and litigating and resolving tax disputes.

TECHNOLOGY

The Technology Subcommittee comprises member firms that specialize in a full range of technology-focused, legal services. Our practices encompass complex transactions, advanced technologies, privacy, cybersecurity, information technology, enterprise technology, intellectual property, artificial intelligence (AI), Internet of things (IoT) and other technology-based services. Members include lawyers that have held leadership positions within AmLaw 100 firms and Fortune 100 companies, and that are leading transactions that impact over 11 figures in annual operating revenues. Clients served by our member firms range from start-ups to Fortune 100 to Global Fortune 500 companies.

TOWLE NEU

CO-CHAIR

Attorney

Sapientia Law Group

towlen@sapientialaw.com



LAURIE SELKOWITZ

CO-CHAIR

Partner

Wargo French Singer

lsekowitz@wargofrench.com



CONTENTS

2 About

3-4 PAC Member General Contact Chart

5-6 PAC Members by Location

7-8 PAC Members by Practice Area

9-11 Banking & Finance Subcommittee

12-14 Corporate, M&A & Securities Subcommittee

15-16 Immigration Subcommittee

17-19 Real Estate Subcommittee

20-23 Technology Subcommittee

PAC Member Firms

Acceleron Law Group, LLP

acceleronlaw.com | CONTACT: Fred Hasani
fhasani@acceleronlaw.com

LOCATIONS: Silicon Valley, CA | Southern California
Washington, D.C.

AlvaradoSmith, A Professional Corporation

alvaradosmith.com | CONTACT: Jerry Ruiz
namwolf@alvaradosmith.com

LOCATIONS: Los Angeles, CA | San Francisco, CA
Santa Ana, CA

Alvarez & Diaz-Silveira LLP

adsllp.com | CONTACT: Albert Diaz-Silveira
adiaz-silveira@adsllp.com

LOCATION: Miami, FL

Avila Rodriguez Hernandez Mena & Garro LLP

arhmf.com | CONTACT: Asnardo Garro
agarro@arhmf.com

LOCATION: Coral Gables, FL

Bryant Rabbino

bryantrabbino.com | CONTACT: B. Seth Bryant
seth@bryantrabbino.com

LOCATION: New York, NY

Budde Law Group

blglegal.net | CONTACT: Denae Budde
dbudde@blglegal.net

LOCATIONS: Walnut Creek, CA

BurgherGray, LLP

burghergray.com | CONTACT: Gopal Burgher
gburgher@burghergray.com

LOCATIONS: New York, NY | Washington, D.C.
Miami, FL

Chen Leftwich LLP

chenmalin.com | CONTACT: Li Chen
lchen@chenmalin.com

LOCATION: Dallas, TX

Culhane Meadows PLLC

culhanemeadows.com | CONTACT: Reiko Feaver
rfeaver@culhanemeadows.com

LOCATIONS: Atlanta | Austin | Boston | Chicago | Dallas
Delaware | Houston | New Jersey | New York
Philadelphia | Washington, D.C.

The Delaware Counsel Group LLC

decg.com | CONTACT: Ellisa Opstbaum Habbart
ehabbart@decg.com

LOCATION: Wilmington, DE

Drohan Lee LLP

dlkny.com | CONTACT: Jae Lee
jlee@dlkny.com

LOCATION: New York, NY

DTO Law

dtolaw.com | CONTACT: Marcos "Mark" Tarango
mtarango@dtolaw.com

LOCATION: Los Angeles, CA | San Francisco, CA

Edwards Maxson Mago & Macaulay

em3law.com | CONTACT: Mazen Asbahi
masbahi@em3law.com

LOCATION: Atlanta, GA | Austin, TX | Chicago, IL
Dallas, TX | New York, NY

Gardner Skelton, PLLC

gardnerskelton.com | CONTACT: Nicole Gardner
nicole@gardnerskelton.com

LOCATION: Charlotte, NC

Goosmann Law Firm

goosmannlaw.com | CONTACT: Jeana Goosmann
goosmannj@goosmannlaw.com

LOCATIONS: Sioux City, IA | Sioux Falls, SD | Omaha, NE

Grant Law, LLC

grantlawllc.com | CONTACT: Maurice Grant
mgrant@gslawllc.com

LOCATION: Chicago, IL

Griesing Law, LLC

griesinglaw.com | CONTACT: Pamela Harper
pharper@griesinglaw.com

LOCATIONS: Philadelphia, PA | New York, NY
Cincinnati, OH

Hughes, Watters & Askanase, L.L.P.

hwa.com | CONTACT: Carolyn Taylor
cat@hwa.com

LOCATIONS: Houston, TX

Johnson Blumberg & Associates

johnsonblumberg.com | CONTACT: Ken Johnson
ken@johnsonblumberg.com

LOCATIONS: Chicago, IL | Milwaukee, WI
Merrillville, IN

Kang Haggerty

kanghaggerty.com | CONTACT: Jacklyn Fetbroyt
jfetbroyt@kanghaggerty.com

LOCATIONS: Philadelphia, PA | Marlton, NJ

KPPB LAW

kppblaw.com | CONTACT: Sonjui L. Kumar
skumar@kppblaw.com

LOCATIONS: Atlanta, GA | New York, NY | Houston, TX
Northern VA

Lawrence Law, LLC

lawrencelawllc.com | CONTACT: Kate Lawrence
kate@lawrencelawllc.com

LOCATION: Baltimore, MD | New York, NY

Lewis & Munday, P.C.

lewismunday.com | CONTACT: Karen K. Brown
kbrown@lewismunday.com

LOCATION: Detroit, MI

LimNexus LLP

limnexus.com | CONTACT: John Lim
john.lim@limnexus.com

LOCATIONS: Los Angeles, CA | San Francisco, CA
Washington, D.C.

Love and Long, L.L.P.

loveandlonglaw.com | CONTACT: Lisa D. Love
llove@loveandlonglaw.com

LOCATIONS: New York, NY | Newark, NJ
Philadelphia, PA

Moore & Associates

kteyamoore.com | CONTACT: Teya Moore
kkm@kteyamoore.com

LOCATIONS: Bowie, MD

MWH Law Group

mwhlawgroup.com | CONTACT: Peggy Miller
peggy.miller@mwhlawgroup.com

LOCATIONS: Milwaukee, WI | Chicago, IL
Indianapolis, IN | West Des Moines, IA

PAG Law

pag.law | CONTACT: Zac Soto
zac@pag.law

LOCATIONS: Miami, FL | New York, NY | Mexico City
Buenos Aires, Argentina

Patrick Law Group

patricklawgroup.com | CONTACT: Lizz Patrick
lpatrik@patricklawgroup.com

LOCATIONS: Atlanta, GA | Chicago, IL

Peacock Law P.C.

peacocklaw.com | CONTACT: Justin Muehlmeier
JRM@PeacockLaw.com

LOCATIONS: Albuquerque, NM | New York, NY



PAC Member Firms

Reiferson Dee

reifersondee.com | CONTACT: **Melanie McMenamin**
melaniem@reifersondee.com
LOCATION: Glen Allen, VA | Pittsburgh, PA | Charlotte, NC

Reyes Kurson, Ltd.

rkchicago.com | CONTACT: **Lauren Mack**
lmack@rkchicago.com
LOCATION: Chicago, IL

Rozario Touma

rozariolaw.com | CONTACT: **Hiba Touma**
htouma@rozariolaw.com
LOCATION: New York, NY

Rusing Lopez & Lizardi, PLLC

rllaz.com | CONTACT: **Tim Reckart**
treckart@rllaz.com
LOCATION: Tucson, AZ | Phoenix, AZ

Sanchez & Amador LLP

sanchez-amador.com | CONTACT: **David Sanchez**
sanchez@sanchez-amador.com
LOCATION: Los Angeles, CA

Sapientia Law Group PLLC

sapientialaw.com | CONTACT: **Towle Neu (CO-CHAIR)**
towlen@sapientialaw.com
LOCATION: Minneapolis, MN

Scanlon Rabinowitz & Davis Legal Group PLLC ("SRD Legal Group")

srdlegalgroup.com | CONTACT: **Andy Hutcher**
ahutcher@srdlegalgroup.com
LOCATION: New York, NY

Scharf Banks Marmor LLC

scharfbanks.com | CONTACT: **Ted Banks**
tbanks@scharfbanks.com
LOCATION: Chicago, IL

SMGQ Law

smgqlaw.com | CONTACT: **Roland Sanchez-Medina Jr.**
roland@smgqlaw.com
LOCATION: Coral Gables, FL

Snyder & Snyder

snyderlaw.net | CONTACT: **Leslie Snyder**
lsnyder@snyderlaw.net
LOCATION: Tarrytown, NY | New York, NY | Newark, NJ

Stokes Lawrence, P.S.

stokeslaw.com | CONTACT: **Chris Graving**
chris.graving@stokeslaw.com
LOCATION: Seattle, WA | Yakima, WA

The Stark Firm PLLC

starkfirmpllc.com | CONTACT: **Erin Stark**
erinstark@starkfirmpllc.com
LOCATION: Atlanta, GA | Miami, FL | Washington, DC
Philadelphia, PA | New York, NY | Houston, TX
Los Angeles, CA

Talem IP Law LLP

talemip.com | CONTACT: **Wendy Zimbone**
wzimbone@talemip.com
LOCATION: Gainesville, FL

Tredway Lumsdaine & Doyle LLP

tldlaw.com | CONTACT: **Brooke M. Pollard**
bpollard@tldlaw.com
LOCATIONS: Long Beach, CA | Irvine, CA | Downey, CA
Beverly Hills, CA

Walsh Pizzi O'Reilly Falanga LLP

walsh.law | CONTACT: **Stephen Falanga**
sfalanga@walsh.law
LOCATION: Newark, NJ | New York, NY | Philadelphia, PA

Wargo French Singer

wargofrench.com | CONTACT: **Laurie Selkowitz**
lselkowitz@wargofrench.com (CO-CHAIR)
LOCATION: Atlanta, GA | Los Angeles, CA | Miami, FL

Wong Fleming

wargofrench.com | CONTACT: **Ramina Dehkhoda-Steele**
rdehkhoda@wongfleming.com
LOCATION: Seattle, WA | Redmond, WA | San Diego, CA
Houston, TX | Princeton, NJ | Atlanta, GA

Yasmin L. Stump Law Group, PC

yasminstump.com | CONTACT: **Yasmin L. Stump**
yasmin@yasminstump.com
LOCATION: Carmel, IN

Zuber Lawler

zuberlawler.com | CONTACT: **Eileen Letts**
eletts@zuberlawler.com
LOCATION: Austin, TX | Chicago, IL | Denver, CO
Los Angeles, CA | New York, NY | Phoenix, AZ
Silicon Valley, CA



PRACTICE AREA KEY

CMAS=Corporate, M&A & Securities | IM=Immigration | TAX=Tax | BF=Banking & Finance | TEC=Technology | RE=Real Estate

Arizona

Rusing Lopez & Lizardi, PLLC.
PRACTICE AREAS: CMAS, IM, TAX, BF, TEC, RE

Zuber Lawler

California

Accelaron Law Group, LLP
PRACTICE AREAS: CMAS, TEC, BF

AlvaradoSmith, A Professional Corporation
PRACTICE AREAS: CMAS, BF, RE

LimNexus LLP
PRACTICE AREAS: CMAS, BF, RE

Sanchez & Amador LLP
PRACTICE AREAS: BF, TEC, RE

The Stark Firm PLLC

Tredway Lumsdaine & Doyle LLP
PRACTICE AREAS: CMAS, TAX

Wargo French Singer LLP
PRACTICE AREAS: CMAS, BF, TEC, RE

Wong Fleming
PRACTICE AREAS: CMAS, IM, BF, TEC, RE

Zuber Lawler

Colorado

Zuber Lawler

Delaware

The Delaware Counsel Group LLC
PRACTICE AREA: CMAS

Florida

Alvarez & Diaz-Silveira LLP
PRACTICE AREAS: CMAS, BF, RE, IM

Avila Rodriguez Hernandez Mena & Ferri LLP
PRACTICE AREAS: CMAS, IM, BF, RE

BurgherGray, LLP
PRACTICE AREAS: CMAS, BF, TEC

PAG Law
PRACTICE AREAS: CMAS, BF, RE, TEC

SMGQ Law
PRACTICE AREAS: CMAS, IM, BF, RE

The Stark Firm PLLC

Talem IP Law LLP

PRACTICE AREAS: TEC

Wargo French Singer LLP
PRACTICE AREAS: CMAS, BF, TEC, RE

Georgia

Accelaron Law Group, LLP
PRACTICE AREAS: CMAS, TEC, BF

Culhane Meadows PLLC
PRACTICE AREAS: CMAS, IM, TAX, BF, TEC, RE

Edwards Maxson Mago & Macaulay

KPPB LAW
PRACTICE AREAS: CMAS, IM, BF, TEC, RE

Patrick Law Group
PRACTICE AREA: TEC

The Stark Firm PLLC
PRACTICE AREAS: CMAS, BF, RE

Wargo French Singer LLP
PRACTICE AREAS: CMAS, BF, TEC, RE

Wong Fleming
PRACTICE AREAS: CMAS, IM, BF, TEC, RE

Illinois

Culhane Meadows PLLC
PRACTICE AREAS: CMAS, IM, TAX, BF, TEC, RE

Edwards Maxson Mago & Macaulay

Grant Law, LLC
PRACTICE AREAS: CMAS, BF, RE

Johnson Blumberg & Associates
PRACTICE AREAS: IM, BF, RE

MWH Law Group
PRACTICE AREA: TEC

Patrick Law Group
PRACTICE AREA: TEC

Reyes Kurson, Ltd.
PRACTICE AREAS: TAX, RE

Scharf Banks Marmor LLC
PRACTICE AREA: TEC

Zuber Lawler

Indiana

Johnson Blumberg & Associates
PRACTICE AREAS: IM, BF, RE

MWH Law Group

PRACTICE AREA: TEC

Yasmin L. Stump Law Group, PC
PRACTICE AREA: RE

Iowa

Goosmann Law Firm
PRACTICE AREA: TEC

MWH Law Group
PRACTICE AREA: TEC

Maryland

Moore & Associates

Massachusetts

Culhane Meadows PLLC
PRACTICE AREAS: CMAS, IM, TAX, BF, TEC, RE

Michigan

Lewis & Munday, P.C.

Minnesota

Sapientia Law Group PLLC
PRACTICE AREAS: CMAS, BF, TEC, RE

Nebraska

Goosmann Law Firm
PRACTICE AREAS: TEC

New Jersey

Kang Haggerty
PRACTICE AREAS: CMAS, BF, RE

Love and Long, L.L.P.
PRACTICE AREAS: CMAS, BF, RE

Snyder & Snyder, LLP
PRACTICE AREAS: RE

Walsh Pizzi O'Reilly Falanga LLP
PRACTICE AREAS: BF, RE, TEC

New Mexico

Peacock Law P.C.
PRACTICE AREA: TEC

New York

Bryant Rabbino

BurgherGray, LLP
PRACTICE AREAS: CMAS, BF, TEC

PRACTICE AREA KEY

CMAS=Corporate, M&A & Securities | IM=Immigration | TAX=Tax | BF=Banking & Finance | TEC=Technology | RE=Real Estate

Culhane Meadows PLLC

 PRACTICE AREAS: CMAS, IM, TAX, BF, TEC, RE

Edwards Maxson Mago & Macaulay

Griesing Law, LLC

 PRACTICE AREAS: CMAS, BF, TEC

KPPB LAW

 PRACTICE AREAS: CMAS, IM, BF, TEC, RE

Love and Long, L.L.P

 PRACTICE AREAS: CMAS, BF, RE

Peacock Law P.C.

 PRACTICE AREA: TEC

Perez Morris

 PRACTICE AREAS: IM, RE

Snyder & Snyder, LLP

 PRACTICE AREAS: RE

The Stark Firm PLLC

 PRACTICE AREAS: CMAS, BF, RE

Walsh Pizzi O'Reilly Falanga LLP

 PRACTICE AREAS: BF, RE, TEC

Wong Fleming

 PRACTICE AREAS: CMAS, IM, BF, TEC, RE

Zuber Lawler

North Carolina

Gardner Skelton, PLLC

 PRACTICE AREA: CMAS, TAX

Ohio

Griesing Law, LLC

 PRACTICE AREAS: CMAS, BF, TEC

Perez Morris

 PRACTICE AREAS: IM, RE

Pennsylvania

Culhane Meadows PLLC

 PRACTICE AREAS: CMAS, IM, TAX, BF, TEC, RE

Griesing Law, LLC

 PRACTICE AREAS: CMAS, BF, TEC

Kang Haggerty

 PRACTICE AREAS: CMAS, BF, RE

Love and Long, L.L.P

 PRACTICE AREAS: CMAS, BF, RE

The Stark Firm PLLC

 PRACTICE AREAS: CMAS, BF, RE

Walsh Pizzi O'Reilly Falanga LLP

 PRACTICE AREAS: BF, RE, TEC

South Dakota

Goosmann Law Firm

 PRACTICE AREA: TEC

Texas

Chen Malin LLP

 PRACTICE AREA: TEC

Culhane Meadows PLLC

 PRACTICE AREAS: CMAS, IM, TAX, BF, TEC, RE

Edwards Maxson Mago & Macaulay

Hughes Watters & Askanase, LLP

KPPB LAW

 PRACTICE AREAS: CMAS, IM, BF, TEC, RE

The Stark Firm PLLC

 PRACTICE AREAS: CMAS, BF, RE

Wong Fleming

 PRACTICE AREAS: CMAS, IM, BF, TEC, RE

Zuber Lawler

Virginia

KPPB LAW

 PRACTICE AREAS: CMAS, IM, BF, TEC, RE

Washington

Stokes Lawrence, P.S.

Wong Fleming

 PRACTICE AREAS: CMAS, IM, BF, TEC, RE

Washington D.C.

BurgherGray, LLP

 PRACTICE AREAS: CMAS, BF, TEC

Culhane Meadows PLLC

 PRACTICE AREAS: CMAS, IM, TAX, BF, TEC, RE

LimNexus LLP

 PRACTICE AREAS: CMAS, BF, RE

The Stark Firm PLLC

 PRACTICE AREAS: CMAS, BF, RE

Wisconsin

Johnson Blumberg & Associates

 PRACTICE AREAS: IM, BF, RE

MWH Law Group

 PRACTICE AREAS: TEC

PAC Members by Practice Area

Banking & Finance

Acceleron Law Group, LLP

📍 LOCATION: CA, D.C.

AlvaradoSmith

📍 LOCATION: CA

Alvarez & Diaz-Silveira LLP

📍 LOCATION: FL

Avila Rodriguez Hernandez Mena & Ferri LLP

📍 LOCATION: FL

BurgherGray LLP

📍 LOCATIONS: NY, D.C., FL

Culhane Meadows PLLC

📍 LOCATIONS: GA, TX, MA, IL, NY, D.C.

Grant Law, LLC

📍 LOCATION: IL

Griesing Law, LLC

📍 LOCATIONS: PA, NY, OH

Johnson, Blumberg & Associates

📍 LOCATIONS: IL, WI, IN, MI, IA

Kang Haggerty

📍 LOCATIONS: PA, NJ

KPPB LAW

📍 LOCATIONS: GA, NY, TX, VA

LimNexus LLP

📍 LOCATIONS: CA, D.C.

Love and Long, L.L.P.

📍 LOCATIONS: NY, NJ, PA

PAG Law

📍 LOCATION: FL, NY, Mexico, Argentina

Rusing Lopez & Lizardi, PLLC

📍 LOCATION: AZ

Sanchez & Amador

📍 LOCATION: CA

Sapientia Law Group, PLLC

📍 LOCATION: MN

Wargo French Singer LLP

📍 LOCATIONS: GA, FL, CA

Wong Fleming

📍 LOCATIONS: WA, CA, NY, TX, GA

Corporate, M&A& Securities

Acceleron Law Group, LLP

📍 LOCATION: CA, D.C.

AlvaradoSmith

📍 LOCATION: CA

Alvarez & Diaz-Silveira LLP

📍 LOCATION: FL

Avila Rodriguez Hernandez Mena & Ferri LLP

📍 LOCATION: FL

BurgherGray LLP

📍 LOCATIONS: NY, D.C., FL

Culhane Meadows PLLC

📍 LOCATIONS: GA, TX, MA, IL, NY, D.C.

The Delaware Counsel Group LLC

📍 LOCATION: DE

Gardner Skelton, PLLC

📍 LOCATION: NC, NY

Grant Law, LLC

📍 LOCATION: IL

Griesing Law, LLC

📍 LOCATIONS: PA, NY, OH

Kang Haggerty

📍 LOCATIONS: PA, NJ

KPPB LAW

📍 LOCATIONS: GA, NY, TX, VA

LimNexus LLP

📍 LOCATIONS: CA, D.C.

Love and Long, L.L.P.

📍 LOCATIONS: NY, NJ, PA

PAG Law

📍 LOCATION: FL, NY, Mexico, Argentina

Rusing Lopez & Lizardi, PLLC

📍 LOCATION: AZ

Sapientia Law Group

📍 LOCATION: MN

Tredway Lumsdaine & Doyle, LLP

📍 LOCATION: CA

Wargo French Singer LLP

📍 LOCATIONS: GA, FL, CA

Wong Fleming

📍 LOCATIONS: WA, CA, NY, TX, GA

Immigration

Avila Rodriguez Hernandez Mena & Ferri LLP

📍 LOCATION: FL

Culhane Meadows PLLC

📍 LOCATIONS: GA, TX, MA, IL, NY, D.C.

Johnson, Blumberg & Associates

📍 LOCATIONS: IL, WI, IN, MI, IA

KPPB LAW

📍 LOCATIONS: GA, NY, TX, VA

Perez Morris

📍 LOCATIONS: OH, NY

PAC Members by Practice Area

Rusing Lopez & Lizardi, PLLC

📍 LOCATION: AZ

Wong Fleming

📍 LOCATIONS: WA, CA, NY, TX, GA

Real Estate

AlvaradoSmith

📍 LOCATION: CA

Alvarez & Diaz-Silveira LLP

📍 LOCATION: FL

Avila Rodriguez Hernandez Mena & Ferri LLP

📍 LOCATION: FL

Culhane Meadows PLLC

📍 LOCATIONS: GA, TX, MA, IL, NY, D.C.

Grant Law, LLC

📍 LOCATION: IL

Johnson, Blumberg & Associates

📍 LOCATIONS: IL, WI, IN, MI, IA

Kang Haggerty

📍 LOCATIONS: PA, NJ

KPPB LAW

📍 LOCATIONS: GA, NY, TX, VA

LimNexus LLP

📍 LOCATIONS: CA, D.C.

Love and Long, L.L.P.

📍 LOCATIONS: NY, NJ, PA

PAG Law

📍 LOCATION: FL, NY, Mexico, Argentina

Perez Morris

📍 LOCATIONS: OH, NY

Reyes Kurson, Ltd.

📍 LOCATION: IL

Rusing Lopez & Lizardi, PLLC

📍 LOCATION: AZ

Sanchez & Amador

📍 LOCATION: CA

Sapientia Law Group, PLLC

📍 LOCATION: MN

Snyder & Snyder, LLP

📍 LOCATION: NJ, NY

Wargo French Singer LLP

📍 LOCATIONS: GA, FL, CA

Wong Fleming

📍 LOCATIONS: WA, CA, NY, TX, GA

Yasmin L. Stump Law Group, PC

📍 LOCATION: IN

Tax

Avila Rodriguez Hernandez Mena & Ferri LLP

📍 LOCATION: FL

Culhane Meadows PLLC

📍 LOCATIONS: GA, TX, MA, IL, NY, D.C.

Reyes Kurson, Ltd.

📍 LOCATION: IL

Rusing Lopez & Lizardi, PLLC

📍 LOCATION: AZ

SMGQ Law

📍 LOCATION: FL

Technology

Acceleron Law Group, LLP

📍 LOCATION: CA, D.C.

BurgherGray LLP

📍 LOCATIONS: NY, D.C., FL

Chen Malin LLP

📍 LOCATION: TX

Culhane Meadows PLLC

📍 LOCATIONS: GA, TX, MA, IL, NY, D.C.

Goosmann Law Firm, PLC

📍 LOCATIONS: IA, SD, NE

Griesing Law, LLC

📍 LOCATIONS: PA, NY, OH

KPPB LAW

📍 LOCATIONS: GA, NY, TX, VA

MWH Law Group LLP

📍 LOCATIONS: WI, IN, IL, IA

PAG Law

📍 LOCATION: FL, NY, Mexico, Argentina

Patrick Law Group

📍 LOCATIONS: GA, IL

Peacock Law P.C.

📍 LOCATIONS: NM, NY

Rusing Lopez & Lizardi, PLLC

📍 LOCATION: AZ

Sanchez & Amador

📍 LOCATION: CA

Sapientia Law Group

📍 LOCATION: MN

Scharf Banks Marmor LLC

📍 LOCATION: IL

Talem IP Law LLP

📍 LOCATION: FL

Wargo French Singer LLP

📍 LOCATIONS: GA, FL, CA

Wong Fleming

📍 LOCATIONS: WA, CA, NY, TX, GA

NAMWOLF | TRANSACTIONAL PRACTICE AREA COMMITTEE

BANKING AND FINANCE SUBCOMMITTEE

The Banking and Finance Subcommittee of the Transactional Practice Area Committee serves as an informational resource and relationship bridge between its members and businesses in the banking and finance industries. Our members are talented lawyers with experience in a wide array of domestic and international banking and finance transactions and regulatory matters. The Subcommittee seeks to leverage the collective experience of its members to promote information exchange and professional development among NAMWOLF member firms, corporate partners and in-house counsels.

Specific Areas of Expertise

- Asset-based financing
- Asset management (private investment funds)
- Bankruptcy and credit restructuring
- Commercial and industrial lending
- Commercial and residential real estate finance
- Community Reinvestment Act (CRA) investments and community development lending
- Consumer finance
- Corporate and commercial transactions
- Debt and equity capital markets transactions
- Debt collections
- Debt private placements
- Institutional investing
- Letters of credit
- Loan trading and syndication
- Mortgage loan servicing
- Portfolio management and debt servicing
- Private equity transactions (including PIPEs)
- Public finance
- Real estate foreclosures
- Risk retention financing
- State and Federal Regulatory Matters
- Structured asset purchases/sales
- Structured finance and securitization
- Structured products and derivatives
- Venture capital and early stage financing
- Whole loan purchases/sales

Banking & Finance Subcommittee Co-Chairs:



Leslie W. Chervokas
Edwards Maxson Mago
& Macaulay LLP
Partner
lchervokas@em3law.com



Lauren Mack
Reyes Kurson
Partner
lmack@rkchicago.com

Acceleron Law Group, LLP

acceleronlaw.com

Office Locations | Silicon Valley, CA | Southern California | Washington, D.C.

Firm Contact | Robert Rugani | rrugani@acceleronlaw.com

BRIEF DESCRIPTION OF experience

We hold expertise in equity and debt financings with the representation of issuers and venture capital investors; representing emerging growth, mid-cap and Fortune-500 companies. We also hold expertise in forming and representing venture funds, and representing fund investors and principals. Our extensive deal experience supports our efficient and effective legal services.

AlvaradoSmith

alvaradosmith.com

Office Locations | Orange County, CA | Los Angeles, CA | San Francisco, CA

Firm Contact | Jerry Ruiz | jruiz@alvaradosmith.com

BRIEF DESCRIPTION OF experience

We advise lenders on all aspects of secured commercial and residential real estate lending, including: loan origination; portfolio management/ servicing; loan workout; forbearance agreements; foreclosures; purchase & sale of loans; loan participation agreements; asset management and disposition; bond counsel in tax-exempt financings; and community and economic development lending and investments (CRA).

Alvarez & Diaz-Silveira LLP

adsllp.com

Office Locations | Miami, FL | New York, NY

Firm Contact | Colleen Grady | cgrady@adsllp.com

BRIEF DESCRIPTION OF experience

In keeping with the firm's focus on transactional matters, our attorneys have extensive experience in finance transactions of all types, from both the lender's and borrower's perspective, including acquisition finance, syndicated credit facilities, asset-based finance, equipment and project finance and real estate finance transactions. We also regularly act as local counsel to borrowers with assets or entities in Florida with respect to their financing facilities and provide the requisite due diligence services and legal opinions.

Avila Rodriguez Hernandez Mena & Ferri LLP

arhmf.com

Office Location | Coral Gables, FL

Firm Contact | Asnardo Garro | agarro@arhmf.com

BRIEF DESCRIPTION OF experience

ARHMF's banking and finance practice areas regularly advise domestic and foreign financial institutions, investors, and various other financial services organizations, including money services businesses, broker-dealers and registered investment advisors, on a variety of regulatory and transactional matters central to their businesses.

BurgherGray LLP

burghergray.com

Office Locations | New York, NY | Washington, D.C. | Miami, FL

Firm Contact | Gopal Burgher | gburgher@burghergray.com

BRIEF DESCRIPTION OF experience

With 70+ years combined experience and many financial services clients, our capital markets, finance and investment management attorneys can help with your banking, fund and complex finance needs, including debt private placements; structured finance/ securitization; ABL and C&I lending; real estate finance; bankruptcy; fund formation; and securities regulatory advice.

Edwards Maxson Mago & Macaulay LLP

em3law.com

Office Locations | Georgia | Illinois | New York | Texas

Firm Contact | Leslie Chervokas | lchervokas@em3law.com

BRIEF DESCRIPTION OF experience

Some of the Firm's largest clients are bank holding companies, commercial banks, investment banks, insurance companies, leasing companies, asset-based lenders or institutional real estate companies. Our Banking & Financial Services practices also represents finance companies, financial service boutiques and other financial institutions and investors, as well as borrowers.

Grant Law, LLC

grantlawllc.com

Office Location | Chicago, IL

Firm Contact | Maurice Grant | mgrant@grantlawllc.com

BRIEF DESCRIPTION OF experience

Grant Law, LLC has considerable experience representing the interests of creditors and lending institutions in federal bankruptcy and state courts covering a wide range of issues. We are equipped to protect the interests of secured and unsecured creditors involved in any contested matters under any chapter of the Bankruptcy Code. We are also able to represent the interests of any creditor initiating a collection action or other commercial litigation against an adverse party. Grant Law's vast experience in transactional matters further qualifies our firm to provide counsel to any creditor in the work-out or liquidation of a commercial entity.

Griesing Law, LLC

griesinglaw.com

Office Locations | Philadelphia, PA | New York, NY | Cincinnati, OH

Firm Contact | Cheryl Borland | cborland@griesinglaw.com

BRIEF DESCRIPTION OF experience

Griesing Law assists with transactions involving private placements, access to capital, financing documents negotiation, acquisition and equipment financing, and real estate purchases. We also provide advice to asset management clients regarding the Investment Advisors Act of 1940, including regulatory analysis, risk assessments, compliance planning, and policy review.

Johnson, Blumberg & Associates

johnsonblumberg.com

Office Locations | Chicago, IL | Milwaukee, WI | Merrillville, IN | Kalamazoo, MI | Des Moines, IA

Firm Contact | Robert Blumberg | rob@johnsonblumberg.com

BRIEF DESCRIPTION OF experience

Johnson, Blumberg & Associates, LLC is a dynamic minority-certified law firm that represents mortgage lenders and servicers in the areas of Foreclosure, Bankruptcy, Title Claims, Housing Code Litigation, Evictions, Closings, Collections and Replevins throughout the Midwest. Our unique and broad footprint in the Midwest allows us to be of greater service to our clients.

Kang Haggerty

khflaw.com

Office Locations | Philadelphia, PA | Marlton, NJ

Firm Contact | Jacklyn Fetbroyt | jfetbroyt@khflaw.com

BRIEF DESCRIPTION OF experience

KHF represents lenders and borrowers in a broad range of financial matters: negotiation and preparation of loan documents, securing indebtedness/collateral analysis, work-outs/forbearance/restructuring agreements, loan sales, lender liability, and creditors rights. Our attorneys find creative solutions to their clients' lending and financing needs.

KPPB LAW

kppblaw.com

Office Locations | Atlanta, GA | New York, NY | Houston, TX | Northern VA

Firm Contact | Kirtan Patel | kpatel@kppblaw.com

BRIEF DESCRIPTION OF experience

Our commercial real estate finance team assists both borrowers and lenders in a wide variety of debt related financing. Our experience includes primary and mezzanine lending transactions for a variety of industries including multi-family, healthcare, hospitality and industrial properties.

LimNexus LLP

limnexus.com

Office Locations | Los Angeles, CA | San Francisco, CA | Washington, D.C.

Firm Contact | Sandy Sakamoto | sandy.sakamoto@limnexus.com

BRIEF DESCRIPTION OF experience

We are seasoned corporate lawyers who represent companies, shareholders, and investors in connection with mergers, acquisitions, investments, asset dispositions, and corporate structuring. We are trusted advisors to our clients on a wide array of domestic and cross-border transactions. We often serve as primary counsel advising clients on corporate governance matters.

Love and Long, L.L.P.

loveandlonglaw.com

Office Locations | New York, NY | Newark, NJ | Philadelphia, PA

Firm Contact | Lisa Love | llove@loveandlonglaw.com

BRIEF DESCRIPTION OF experience

Love and Long LLP and its attorneys have represented public agencies, commercial banks, insurance companies and other prestigious institutional lenders, as well as borrowers, in a wide range of commercial finance transactions including corporate and public finance, securities issuances, mergers and acquisitions, project redevelopment finance, tax credit transactions and other commercial transactions. Attorneys at the Firm bring professionalism, attention to detail, creativity and commercial sensitivity to every representation. Recently, the Firm represented a syndicate of lenders in a multi-million credit facility with Comcast.

Reyes Kurson, Ltd.

rkchicago.com

Office Locations | Illinois

Firm Contact | Lauren Mack | lmack@rkchicago.com

Rusing, Lopez & Lizardi

rllaz.com

Office Locations | Tucson, AZ | Phoenix, AZ

Firm Contact | Oscar Lizardi | olizardi@rllaz.com

BRIEF DESCRIPTION OF experience

We represent lenders and borrowers in loan transactions, collection matters, bankruptcy, and workouts. We are listed in the Red Book and handle bond and tax credit transactions for issuers, underwriters, and borrowers. Our Firm is AV rated by Martindale Hubble, and many of our lawyers are recognized by Best Lawyers in America, Super Lawyers, and others.

Sanchez & Amador

sanchez-amador.com

Office Location | Los Angeles, CA

Firm Contact | David Sanchez | sanchez@sanchez-amador.com

BRIEF DESCRIPTION OF experience

Our Banking & Finance Group has represented major financial institutions as lenders in commercial and private banking matters for over 20 years. The firm also represents private equity funds and companies as borrowers. Our finance attorneys have served as in-house counsel for major banks and other lenders and have practiced at some of the largest law firms in the nation.

Sapientia Law Group, PLLC

sapientialaw.com

Office Location | Minneapolis, MN

Firm Contact | Nick Leonard | nickl@sapientialaw.com

BRIEF DESCRIPTION OF experience

Sapientia represents lenders and borrowers in all facets of lending and finance, whether secured by real estate, equity or other assets. With flexible alternative fee arrangements, Sapientia's attorneys and clients work together cost-effectively on finance transactions including construction and term loans, revolving lines of credit, business asset financing, loan participation, and acquisition loans.

The Stark Firm, PLLC

starkfirmpllc.com

Office Location | Atlanta, GA | Washington, DC | Philadelphia, PA | New York, NY
Los Angeles, CA | Houston, TX | Miami, FL

Firm Contact | Erin Stark | erinstark@starkfirmpllc.com

BRIEF DESCRIPTION OF EXPERIENCE

THE STARK FIRM is a practice that covers over 16 states with a focus solely on the representation of financial institutions. The founding partner has a deep expertise in banking, finance, lending, real estate transactions, bank regulatory, SBA services and creditor's rights which we have developed into a thriving firm supporting national and regional financial institutions.

Walsh Pizzi O'Reilly Falanga LLP

walsh.law

Office Locations | Newark, NJ | New York, NY | Philadelphia, PA

Firm Contact | Stephen Falanga | sfalanga@walsh.law

BRIEF DESCRIPTION OF experience

Walsh regularly negotiates and drafts loan documents and other complex financial instruments, perfecting liens, advising buyers and sellers in the purchase and sale of assets, and providing counsel in connection with all UCC-related issues including secured transactions, letters of credit, negotiable instruments, documents of title and warehousemen's liens.

Wargo French Singer LLP

wargofrench.com

Office Locations | Atlanta, GA | Miami, FL | Los Angeles, CA

Firm Contact | Guillermo Todd | gtodd@wargofrench.com

BRIEF DESCRIPTION OF experience

We advise private and institutional lenders and borrowers through each phase of the commercial lending process and across various lending platforms. We have experience in structuring and negotiating middle market asset-based loan transactions, including multi-bank syndicated loans, term loans, committed revolving credit facilities, lines of credit, and financing.



NAMWOLF | TRANSACTIONAL
PRACTICE AREA COMMITTEE

CORPORATE, M&A AND SECURITIES SUBCOMMITTEE

The members of the Corporate, M&A, and Securities Subcommittee of the Transactional Practice Area Committee specialize in sophisticated transactions involving corporations, limited liability companies, partnerships and other forms of business enterprises, including funds and B Corps. Its members bring a wealth of transactional experience relevant to all stages of the life cycle of a business from start-up through expansion to exit, including mergers and acquisitions, dispositions and related governance issues. The Subcommittee serves as a resource to NAMWOLF member firms, corporate partners, and in-house counsel.

Specific Areas of Expertise

- Mergers
- Stock sales and purchase
- Asset sales and purchases
- Sales of divisions, leveraged buyouts
- Restructurings
- Spin-offs
- Divestitures
- Joint ventures
- Strategic alliances
- Venture financing
- Corporate governance counselling
- Strategic business counselling
- Legal due diligence

Corporate, M&A and Securities Subcommittee Co-Chairs:



Sandra Honegan-Pounder
BurgherGray LLP
Partner
spounder@burghergray.com



Ellisa Opstbaum Habbart
The Delaware Counsel
Group LLC
Partner
ehabbart@decg.com

Acceleron Law Group, LLP

acceleronlaw.com

Office Locations | Silicon Valley, CA | Southern California | Washington, D.C.

Firm Contact | Robert Rugani | rrugani@acceleronlaw.com

BRIEF DESCRIPTION OF experience

With headquarters in Silicon Valley, Acceleron Law Group specializes in venture capital and M&A transactions in the technology industry, representing strategic corporate investors, venture capital funds and target companies. Acceleron attorneys previously served as in-house counsel to high profile technology companies and as outside counsel at Am Law 100 law firms.

AlvaradoSmith

alvaradosmith.com

Office Locations | Santa Ana, CA | Los Angeles, CA | San Francisco, CA

Firm Contact | Ruben Smith | rsmith@alvaradosmith.com

BRIEF DESCRIPTION OF experience

AlvaradoSmith counsels and solves day-to-day problems faced by our clients in today's complex business environment. This includes negotiating and documenting supplier and customer relationships, clearing regulatory hurdles, structuring financings, and counseling regarding corporate control disputes among a myriad of other challenges.

Alvarez & Diaz-Silveira LLP

adsllp.com

Office Location | Miami, FL

Firm Contact | Albert Diaz-Silveira | adiaz-silveira@adsllp.com

BRIEF DESCRIPTION OF experience

ADS attorneys regularly advise companies of all sizes and sophisticated individuals in connection with mergers and acquisitions, joint ventures, financings and other complex business deals. We also counsel governing bodies and other stakeholders with respect to maintaining practical and proactive governance policies and effectively managing their duties and obligations. Additionally, ADS has built an active practice representing early stage and developing enterprises in connection with capital raises in the venture and private equity spaces.

Avila Rodriguez Hernandez Mena & Ferri LLP

arhmf.com

Office Location | Coral Gables, FL

Firm Contact | Asnardo Garro | agarro@arhmf.com

BRIEF DESCRIPTION OF experience

In a global economy, ARHMF's transactional attorneys find viable solutions to help multinational, international and domestic clients understand and minimize risk from contract negotiation through closing the deal and beyond. We represent investors and private and public companies in a variety of transactional and corporate matters in the U.S., Latin America, and Europe, including complex M&A transactions and asset sales.

BurgherGray LLP

burghergray.com

Office Locations | New York, NY | Washington, D.C. | Miami, Florida

Firm Contact | Sandra Honegan-Pounder | spounder@burghergray.com

BRIEF DESCRIPTION OF experience

BurgherGray attorneys have structured, negotiated and closed hundreds of mergers, stock and asset sales and purchases, leveraged buyouts, and other transactions involving changes in ownership and managerial control. We also advise clients in connection with recapitalizations and restructurings, including spin-offs, divestitures, joint ventures and strategic alliances.

Culhane Meadows PLLC

culhanemeadows.com

Office Locations | Atlanta, GA | Austin, TX | Boston, MA | Chicago, IL | Dallas, TX
Houston, TX | New York, NY | Philadelphia, PA | Washington, DC

Firm Contact | Alicia Goodrow | agoodrow@culhanemeadows.com

BRIEF DESCRIPTION OF experience

Deals include: Asset sales; Stock sales acquisitive mergers; Reverse triangular mergers; "Cash-out" mergers; Leveraged buy-outs; Employee stock ownership plans acquisitions; Venture capital transactions; Joint ventures; Strategic alliances; Spin-offs, split-offs and split-ups; Recapitalizations; Cross-entity mergers; Proxy contests; Also advise on SEC compliance.

The Delaware Counsel Group LLC

decg.com

Office Location | Wilmington, DE

Firm Contact | Elisa Opstbaum Habbart | ehabbart@decg.com

BRIEF DESCRIPTION OF experience

The Delaware Counsel Group (DCG) represents clients in complex national & international business transactions with a Delaware connection. DCG has handled substantial cross border work from countries around the world to provide Delaware-specific advice to its clients. Engagements have focused on acquisitions, joint ventures, equity investments, and secured financings.

Grant Law, LLC

grantlawllc.com

Office Location | Chicago, IL

Firm Contact | Maurice Grant | mgrant@grantlawllc.com

BRIEF DESCRIPTION OF experience

Corporations of all sizes, in a broad range of industries, look to Grant Law, LLC for a variety of legal services and casework, including drafting bylaws and resolutions, corporate counseling, review and drafting of legal contracts, sales of businesses and other related transactions, and representation in matters of banking, retailing, real estate and construction.

Griesing Law, LLC

griesinglaw.com

Office Locations | Philadelphia, PA | New York, NY | Cincinnati, OH

Firm Contact | Pamela Harper | p Harper@griesinglaw.com

BRIEF DESCRIPTION OF experience

Griesing Law provides innovative and cost-effective legal solutions for complex transactions. We offer legal advice on how to accomplish strategic objectives, avoid disputes, comply with applicable law, and reduce legal exposure. Our practice focuses on corporate transactions, governance and compliance, as well as government and regulatory affairs.

Kang Haggerty

khflaw.com

Office Locations | Philadelphia, PA | Marlton, NJ

Firm Contact | Jacklyn Fetbroyt | jfetbroyt@khflaw.com

BRIEF DESCRIPTION OF experience

KHF helps clients develop creative structures for securities transactions—private placements and investments, offerings, debt and equity structuring, and compliance/reporting. Our clients benefit from our practical experience and the experience of our former SEC Division of Corporate Finance and Office of Disclosure Policy attorney.

KPPB LAW

kppblaw.com

Office Locations | Atlanta, GA | New York, NY | Houston, TX | Northern VA
Firm Contact | Sonjui L. Kumar | skumar@kppblaw.com

BRIEF DESCRIPTION OF experience

KPPB LAW provides legal services related to corporate governance, mergers and acquisitions, securities law compliance and general corporate matters. Our corporate services support business owners, managers, investors and buyers through the life cycle of an enterprise including establishment of their corporate governance structure. Our M&A services include: Private Company Acquisitions and Sales, Acquisitions, Sales and Spin-Offs of Subsidiaries, Divisions and Other Assets, Joint Ventures, Formation and Operation of Strategic Alliances, Asset Sale Transactions, Management and Leveraged buyouts including cross-border transactions. Our Securities Law services include the drafting of private placement memorandums and handling of private equity investments and sales of equity.

LimNexus LLP

limnexus.com

Office Locations | Los Angeles, CA | San Francisco, CA | Washington, D.C.
Firm Contact | Sandy Sakamoto | sandy.sakamoto@limnexus.com

BRIEF DESCRIPTION OF experience

We represent clients from a diverse range of industries in both domestic and cross-border transactions such as complex joint ventures, mergers and acquisitions, distribution agreements, licensing, and other business transactions. Our lawyers are experienced in debt and equity financing, asset-based loans, secured credit facilities, private placement and venture finance.

Love and Long, L.L.P.

loveandlonglaw.com

Office Locations | New York, NY | Newark, NJ | Philadelphia, PA
Firm Contact | Lisa Love | llove@loveandlonglaw.com

BRIEF DESCRIPTION OF experience

Love and Long represents corporations and public entities in connection with joint ventures, strategic alliances, venture financing, restructurings, mergers, stock sales and purchase, asset sales and purchases, divestitures, leveraged buyouts, corporate governance, and legal due diligence. Recently, the Firm represented a state insurance department in the antitrust review and analysis of the CVS-Caremark Aetna merger.

PAG Law

pag.law

Office Locations | Miami, FL | New York, NY | Mexico City | Buenos Aires
Firm Contact | Zac Soto | zac@pag.law

BRIEF DESCRIPTION OF experience

PAG Law is a boutique business law firm providing sophisticated corporate counsel to clients both domestically and internationally. Our attorneys have experience working with Fortune 500 companies in addition to mid-size, small and growth-stage businesses, as well as advising high net worth individuals regarding commercial contracts, deals and investor-related matters.

Patrick Law Group

patricklawgroup.com

Office Locations | Atlanta, GA | Chicago, IL
Firm Contact | Elizabeth Patrick | lpatrik@patricklawgroup.com

BRIEF DESCRIPTION OF experience

Patrick Law Group is an agile, results-driven law firm focused on negotiating business contracts, with expertise in technology and general commercial transactions, including artificial intelligence, robotic process automation, mobile applications, data analytics, technology development and license arrangements and US and global data privacy laws and regulations.

Rusing Lopez & Lizardi, PLLC

rllaz.com

Office Locations | Tucson, AZ | Phoenix, AZ
Firm Contact | Tim Reckart | treckart@rllaz.com

BRIEF DESCRIPTION OF experience

Our experience says: clients first need to understand a transaction's legal issues and business risks to navigate the complex issues and have informed due diligence. Then drawing on this knowledge and our expertise, we document the deal and support transition. We advise entities in all legal matters and counsel emerging companies in venture financing & exit.

Tredway Lumsdaine & Doyle, LLP

tldlaw.com

Office Locations | Long Beach, CA | Irvine, CA | Downey, CA
Beverly Hills, CA

Firm Contact | Brooke Pollard | bpollard@tldlaw.com

BRIEF DESCRIPTION OF experience

TLD Law represents closely-held businesses in Southern California with mergers and acquisitions and corporate compliance. The firm maintains approximately 300 corporate books for existing clients, and handles a significant number of business sale and purchases due to our significant ties to local businesses over the course of our 58 year history.

Walsh Pizzi O'Reilly Falanga LLP

walsh.law

Office Location | Newark, NJ | New York, NY | Philadelphia, PA
Firm Contact | Stephen Falanga | sfalanga@walsh.law

BRIEF DESCRIPTION OF EXPERIENCE

Walsh represents clients (debtors, secured/unsecured creditors, lessors, creditors' committees, purchasers/sellers of distressed assets, equity interest holders, trustees, etc.) in a range of business restructurings, out-of-court workouts, liquidations, litigation, transactions and other situations involving distressed entities, including in restructuring and insolvency.

Wargo French Singer LLP

wargofrench.com

Office Locations | Atlanta, GA | Miami, FL | Los Angeles, CA
Firm Contact | Alina Singer | asinger@wargofrench.com

BRIEF DESCRIPTION OF experience

Wargo French Singer advises entities, including corporations, nonprofit corporations, joint ventures, limited liability companies, sole proprietorships, partnerships and other business associations, on general corporate and partnership issues, complex business transactions, mergers & acquisitions, and strategic business combinations.



PASSPORT

NAMWOLF

TRANSACTIONAL
PRACTICE AREA COMMITTEE

IMMIGRATION SUBCOMMITTEE

The Immigration Subcommittee of the Transactional PAC is a network of minority and women-owned firms that specialize in providing high-quality immigration services. Our goal is to build mutually beneficial relationships between our members and businesses with immigration needs. Our members are talented and experienced NAMWOLF firms and lawyers who share and promote the depth of knowledge and expertise with other NAMWOLF members, their partners and in-house counsel. They are dedicated to highest quality services for employers and their employees, cost effective assistance, and compliance solutions.

Our firms are capable of serving clients in all states and numerous languages.

Specific Areas of Expertise

Nonimmigrant Employment-Based Visas

- H-1B, specialty occupation workers
- TN, Canadians and Mexican NAFTA workers
- H-2, seasonal workers
- H-3, trainees
- L-1A/B, intracompany management, executive and professional transferees
- B-1, temporary business visitors
- J-1, exchange visitors
- O-1, foreigners with exceptional ability

Corporate immigration compliance

- I-9 employment verification
- E-Verify
- Department of Labor investigations of H-1B, PERM programs, and I-9 files

Family-Based Immigration

- Adjustment of Status
- Petitions for Alien Relative
- Naturalization Application

All Employment Based Immigration including EB-1, EB-2, EB-3, EB-4 and EB-5

Immigration Subcommittee Chair:



Kenneth Johnson
Johnson, Blumberg &
Associates, LLC
Managing Partner
ken@johnsonblumberg.com

Immigration Subcommittee Member Firms

Avila Rodriguez Hernandez Mena & Ferri LLP

arhmf.com

Office Location | Coral Gables, FL

Firm Contact | Eugenio Hernandez | ehernandez@arhmf.com

BRIEF DESCRIPTION OF experience

ARHMF's immigration team has extensive experience in assisting foreign and domestic businesses as they navigate the U.S. immigration regulatory process and formulate immigration strategies for their multinational operations. We represent foreign and domestic corporate clients in transferring personnel to the United States as well as individuals seeking to immigrate.

Culhane Meadows PLLC

culhanemeadows.com

Office Locations | Atlanta, GA | Austin, TX | Boston, MA | Chicago, IL | Dallas, TX
Houston, TX | New York, NY | Philadelphia, PA | Washington, DC

Firm Contact | Christopher Giles | cgiles@culhanemeadows.com

BRIEF DESCRIPTION OF experience

Wide range of immigration needs for corporate clients, from sponsorship of key employees for temporary visas and permanent residence, to I-9 compliance advice, government investigations and due diligence. Our work is concentrated in three major areas: (1) immigration sponsorship; (2) compliance; and (3) program design and development.

Johnson, Blumberg & Associates

johnsonblumberg.com

Office Locations | Chicago, IL | Kalamazoo, MI | Merrillville, IN | Des Moines, IA
Milwaukee, WI

Firm Contact | Kenneth Johnson | ken@johnsonblumberg.com

BRIEF DESCRIPTION OF experience

Johnson, Blumberg & Associates' immigration team assists public and private corporations in a variety of industries with their immigration law needs. We help businesses with their staffing demands, global mobility programs, and compliance requirements. As a minority-certified law firm, we have the ability to provide services in more than ten languages.

KPPB LAW

kppblaw.com

Office Locations | Atlanta, GA | New York, NY | Houston, TX | Northern VA

Firm Contact | Beeraj Patel | bpatel@kppblaw.com

BRIEF DESCRIPTION OF experience

Our immigration practice focuses on business immigration for companies, including counseling our clients on how to navigate the U.S. immigration system to achieve the fastest and most efficient results. We also assist individuals who are applying directly for U.S. visas including EB5 investors.

Rusing Lopez & Lizardi, PLLC

rllaz.com

Office Locations | Tucson, AZ | Phoenix, AZ

Firm Contact | Tim Reckert | treckart@rllaz.com

BRIEF DESCRIPTION OF experience

Rusing, Lopez & Lizardi provides companies of all sizes with current, clear, and effective advice on business immigration issues, such as obtaining non-immigrant work visas in the areas of intercompany transfers, temporary entry for business persons under the North American Free Trade Agreement, treaty investors, and specialty workers or H-1B Visas.





NAMWOLF

TRANSACTIONAL
PRACTICE AREA COMMITTEE

REAL ESTATE SUBCOMMITTEE

The Real Estate Subcommittee consists of experienced real estate lawyers from member firms across the country. Our members handle sophisticated transactions for companies and financial institutions with office, commercial, retail, industrial, warehouse, mixed use projects and other assets for development, acquisition, disposition, financing, and leasing. The experience base of our members is broad and includes providing clients with creative solutions in the areas of land use, construction, debt and equity financing, EB-5 financing, eminent domain, and redevelopment.

Specific Areas of Expertise

- Acquisitions
- Dispositions
- Land Use and Zoning
- Commercial Development
- Construction
- Leasing
- Debt and Equity Financing
- EB-5 Financing
- Redevelopment
- Environmental

Real Estate Subcommittee Co-Chairs:



Maggie Barreto-Tercilla
Avila Rodriguez Hernandez
Mena & Ferri
Partner
mbarreto@arhmf.com



Marcos "Mark" Tarango
DTO Law
Partner
mtarango@dtolaw.com

AlvaradoSmith

alvaradosmith.com

Office Locations | Orange County, CA | Los Angeles, CA | San Francisco, CA
Firm Contact | Jerry Ruiz | jruiz@alvaradosmith.com

BRIEF DESCRIPTION OF experience

We are your partner in any transactional real estate question, identifying risks, potential deal breakers, and other issues to think about before you enter into an agreement. Our Real Estate practice includes: Construction Contracts, Eminent Domain, Inverse Condemnation, Environmental and Natural Resources Land Use, Leasing, Purchase and Sale and Secured Transactions.

Alvarez & Diaz-Silveira LLP

adsllp.com

Office Location | Miami, FL
Firm Contact | Lauren Hunt | lhunt@adsllp.com

BRIEF DESCRIPTION OF experience

The attorneys of Alvarez & Diaz-Silveira LLP are highly experienced in representing corporate, private equity and institutional clients in a broad spectrum of real estate transactions, including the acquisition, leasing, financing, management, development and sale of commercial, industrial, retail and residential properties as well as general corporate matters.

Avila Rodriguez Hernandez Mena & Ferri LLP

arhmf.com

Office Location | Coral Gables, FL
Firm Contact | Maggie Barreto-Tercilla | mbarreto@arhmf.com

BRIEF DESCRIPTION OF experience

ARHMF's real estate attorneys represent clients at the local, national and international level in commercial real estate matters including acquisitions, construction contracts, dispositions, financings, leasing, loan purchases and sales, servicing, workouts and other real estate and capital market related matters. We are accustomed to representing clients in complex transactions with tight timeframes.

Culhane Meadows PLLC

culhanemeadows.com

Office Locations | Atlanta, GA | Austin, TX | Boston, MA | Chicago, IL | Dallas, TX
Houston, TX | New York, NY | Philadelphia, PA | Washington, DC
Firm Contact | Sharon Lewonski | slewonski@culhanemeadows.com

BRIEF DESCRIPTION OF experience

CM's Real Estate Practice Group attorneys provide expert legal and practical business advice - on time and on budget, on all types of real property transactions and disputes, in a wide array of industries to include construction, infrastructure, housing, office, retail, restaurant, hotel, medical office, hospital, oil and energy, automotive, industrial and manufacturing.

DTO LAW

dtolaw.com

Office Locations | California
Firm Contact | Marcos "Mark" Tarango | mtarango@dtolaw.com

Goosmann Law Firm, PLC

goosmannlaw.com

Office Locations | Sioux City, IA | Sioux Falls, SD | Omaha, NE
Firm Contact | Alex Berenstein | berensteina@goosmannlaw.com

BRIEF DESCRIPTION OF experience

Aimee Lowe's extensive background includes serving as legal counsel in the transactional and litigation areas of corporate guidance, business law, creditor, real estate and land title, trusts and estate, contract negotiations, employment, and intellectual property matters. She can discern your need before the need arises.

Grant Law, LLC

grantlawllc.com

Office Location | Chicago, IL
Firm Contact | Maurice Grant | mgrant@grantlawllc.com

BRIEF DESCRIPTION OF experience

Grant Law, LLC leverages its extensive experience in handling real estate matters for developers, investors, lenders and other businesses. We provide a full range of real estate services, including dispositions and acquisitions, mortgage and construction financing and leasing. Our expertise in all areas of commercial lending includes experience in banking law, lending, leasing, structured finance, and project finance and securitizations.

Johnson, Blumberg & Associates

johnsonblumberg.com

Office Locations | Chicago, IL | Milwaukee, WI | Merrillville, IN | Kalamazoo, MI |
Des Moines, IA | MN
Firm Contact | Ken Johnson | ken@johnsonblumberg.com

BRIEF DESCRIPTION OF experience

We have extensive experience representing landlords and court-appointed receivers in foreclosure, litigation, eviction, loan workout, collection and bankruptcy matters. Our in-house REO Department negotiates terms with the buyer, clear exceptions from title, comply with all municipal requirements, full closing documentation, and ensure that proceeds are promptly received.

Kang Haggerty

khflaw.com

Office Locations | Philadelphia, PA | Marlton, NJ
Firm Contact | Jacklyn Fetbroyt | jfetbroyt@khflaw.com

BRIEF DESCRIPTION OF experience

KHF has considerable experience closing real estate deals for owners, developers, lenders, homebuilders, landlords and tenants. KHF coordinates the parties and consummates the deal, including acquisition, renovation, leasing, debt and equity financing, land use and zoning regulations, mortgage loan workout, and disposition of distressed assets.

KPPB LAW

kppblaw.com

Office Locations | Atlanta, GA | New York, NY | Houston, TX | Northern VA
Firm Contact | Kirtan Patel | kpatel@kppblaw.com

BRIEF DESCRIPTION OF experience

KPPB Law's real estate and secured lending attorneys have extensive knowledge and experience in a wide range of real estate issues. We regularly represent commercial clients on acquisitions, sales, construction, leasing, and other land use matters.

LimNexus LLP

limnexus.com

Office Locations | Los Angeles, CA | San Francisco, CA | Washington, D.C.

Firm Contact | Sandy Sakamoto | sandy.sakamoto@limnexus.com

BRIEF DESCRIPTION OF experience

Real estate lawyers who understand our clients' business. We represent and advise lenders, corporations, investors, developers and public agencies in all aspects of real estate transactions. We have decades of experience handling acquisitions, dispositions, financing and leasing of all classes of assets including office, retail, industrial, and commercial properties.

Love and Long, L.L.P.

loveandlonglaw.com

Office Locations | New York, NY | Newark, NJ | Philadelphia, PA | Washington, D.C.

Firm Contact | Reginald Long | rlong@loveandlonglaw.com

BRIEF DESCRIPTION OF experience

Our real estate practice includes transactions involving the acquisition, development, financing, leasing, disposition and restructuring of multifamily, office, retail, industrial, mixed-use and hospitality projects. We represent developers, public agencies, lenders, insurance companies, community development corporations, cooperative associations, lenders, pension funds and other entities in varied real estate projects with the experience to structure highly complex and complicated real estate transactions. Recently, the Firm negotiated the operating lease for the Jacob Javit Center in New York.

MWH Law Group LLP

mwhlawgroup.com

Office Locations | Milwaukee, WI | Indianapolis, IN | Chicago, IL | West Des Moines, IA

Firm Contact | Lindsay Fathallah | lindsay.fathallah@mwhlawgroup.com

BRIEF DESCRIPTION OF experience

From single-asset transactions to large multi-site deals, our attorneys have the experience and extensive practical knowledge to assist clients in developing the best strategies to address the broad and varied range of issues that arise relating to real property. We represent Fortune 100/500® corporations, governments, partnerships and financial institutions.

Rusing, Lopez & Lizardi

rllaz.com

Office Locations | Tucson, AZ | Phoenix, AZ

Firm Contact | Jonathan Saffer | jsaffer@rllaz.com

BRIEF DESCRIPTION OF experience

Expertise in acquisition, development, leasing, finance, land use, entitlement, bonds, etc. Expertise in retail, office, hospitality, residential, industrial, schools... Representing developers, operators, tenants, lenders... Recently, we have handled acquisitions, dispositions, financings, foreclosures, leases, entitlements, development, bonds... We want to help you!

Sanchez & Amador, LLP

sanchez-amador.com

Office Location | Los Angeles, CA

Firm Contact | David Sanchez | sanchez@sanchez-amador.com

BRIEF DESCRIPTION OF experience

Our Banking and Finance attorneys represent lenders in all phases of commercial real estate financing transactions – from loan originations and modifications to workouts, restructuring and lender liability avoidance. The firm leverages Big Law talent with valuable “in-house legal” perspective to deliver quality work product and business-sensitive legal advice to clients.

Sapientia Law Group, PLLC

sapientialaw.com

Office Location | Minneapolis, MN

Firm Contact | Towle Neu | towlen@sapientialaw.com

BRIEF DESCRIPTION OF experience

Whether purchasing, selling, building, lending, leasing, or managing, Sapientia navigates the legal maze of real estate transactions so its clients can focus on the deal. With flexible alternative fee arrangements, Sapientia's attorneys and clients work together cost-effectively on transactions involving office, retail, industrial, residential, and multi-tenant properties. yasminstumplaw.com

Office Location | Carmel, IN

Firm Contact | Yasmin L. Stump | yasmin@yasminstumplaw.com

BRIEF DESCRIPTION OF experience

YLSLG's attorneys have exceptional experience in real estate transactions and litigation, including real estate acquisitions, dispositions, leases and other contracts, title examinations and opinions, real estate project management, eminent domain, nuisance, encroachment, boundary, quiet title, right of way enforcement, land use, and code enforcement matters.

The Stark Firm, PLLC

starkfirmpllc.com

Office Locations | Atlanta, GA | Miami, FL | Washington, DC | Philadelphia, PA
New York, NY | Houston, TX | Los Angeles, CA

Firm Contact | Erin Stark | erinstark@starkfirmpllc.com

BRIEF DESCRIPTION OF experience

With offices in major business centers in the United States, Stark is a national practice with a focus on the representation of financial institutions. Stark offers a cradle-to-grave service that unifies all components—lending (secured or unsecured), leases, collection, litigation, land use, bankruptcy, foreclosure, regulatory advice, workouts, corporate property,



TLD Law

tldlaw.com

Office Locations | Long Beach, CA | Irvine, CA | Downey, CA
Beverly Hills, CA

Firm Contact | Brooke Pollard | bpollard@tldlaw.com

BRIEF DESCRIPTION OF experience

TLD Law provides real estate-related services including commercial contracts, insurance issues, construction disputes, mechanics liens, lender liability, eminent domain, zoning, unlawful detainers, purchase and sale contracts, real estate contract breaches, foreclosure, leasing, real estate development, and financing and broker liability disputes. As part of our full-service real estate offerings, our attorneys advise on real property topics that facilitate financing, leasing, development, construction, joint venture structuring, zoning, and related areas for office, retail, and industrial properties.

Walsh Pizzi O'Reilly Falanga LLP

walsh.law

Office Locations | Newark, NJ | New York, NY | Philadelphia, PA

Firm Contact | Stephen Falanga | sfalanga@walsh.law

BRIEF DESCRIPTION OF experience

Walsh is experienced representing buyers, sellers and lenders in connection with the purchase, sale and financing of commercial real estate transactions and asset sales from inception through due diligence and closing. We also represent lessors and lessees in connection with the negotiation and documentation of complex commercial leasing transactions and related issues.

Wargo French Singer LLP

wargofrench.com

Office Locations | Atlanta, GA | Miami, FL | Los Angeles, CA

Firm Contact | Robert Chubb | rchubb@wargofrench.com

BRIEF DESCRIPTION OF experience

WF attorneys have extensive experience advising clients with respect to a broad range of commercial real estate and construction transactions throughout the U.S. Such transactions include the planning, acquisition, disposition, leasing, financing, construction and development of various retail, industrial, office, hotel, multi-family housing and mixed-use projects.

Yasmin L. Stump Law Group, PC

yasminstumplaw.com

Office Location | Carmel, IN

Firm Contact | Yasmin L. Stump | yasmin@yasminstumplaw.com

BRIEF DESCRIPTION OF experience

YLSLG's attorneys have exceptional experience in real estate transactions and litigation, including real estate acquisitions, dispositions, leases and other contracts, title examinations and opinions, real estate project management, eminent domain, nuisance, encroachment, boundary, quiet title, right of way enforcement, land use, and code enforcement matters.



NAMWOLF | TRANSACTIONAL PRACTICE AREA COMMITTEE

TAX SUBCOMMITTEE

The **Tax Subcommittee** of the Transactional Practice Area Committee is comprised of seasoned and experienced tax attorneys whose broad range of experience spans from providing tax advice on M&A transactions, advising on tax aspects of cross-border transactions to representing clients in federal courts on tax related disputes. The Tax Subcommittee is a resource for the Transactional Practice Area Committee's other Subcommittees as they can draw on our members to provide them with tax guidance on specific matters. The Tax Subcommittee seeks to leverage the collective experience of its members to promote information exchange and professional development among NAMWOLF member firms, corporate partners and in-house counsels.

Specific Areas of Expertise

- GILTI and FDII
- Income Tax Compliance and Planning for IRA's and 401(k)'s
- Tax Considerations in Cross Border Loans and ISDA Transactions
- Tax Considerations in M&A Transactions
- Foreign Investment in US Real Estate
- Pre-immigration Tax Planning
- Foreign Investments In US Tax Structuring
- Cross-border Tax Planning
- Structuring of Financing and Investment SPVs
- Phantom Income Avoidance
- State and Local Tax Matters
- Tax Exempt Organizations
- Business Tax Compliance
- Tax Controversies
- Partnership Taxation
- Choice of Entity Considerations
- Tax Structuring Considerations for Alternative Investment Vehicles

Tax Subcommittee Co-Chairs



Robert J. Kiggins
Culhane Meadows PLLC
Partner
rkiggins@cm.law



Jae W. Lee
Drohan Lee LLP
Partner
jlee@dllkny.com

BurgherGray LLP

burghergray.com

Office Locations | New York, NY | Washington, D.C. | Chicago, IL | Miami, FL

Firm Contact | Augusto Egoavil | aegoavil@burghergray.com

BRIEF DESCRIPTION OF EXPERIENCE

Augusto Egoavil is a corporate finance transactional attorney specializing in international taxation, both outbound and inbound. He graduated from the Universidad Catolica Andres Bello in Caracas, Venezuela and received an LL.M. from Cornell Law School. He also holds a M.R.P. from Cornell University. Mr. Egoavil advises corporate clients on cross-border transactions and high net worth individuals, non-resident aliens or individuals treated as U.S. persons, to organize their assets in a tax and legal efficient manner for purposes of creditor protection and taxes. He also provides tax advice on securitization schemes and structuring of derivatives and investment vehicles.

Culhane Meadows PLLC

culhanemeadows.com

Office Locations | Atlanta, GA | Austin, TX | Boston, MA | Chicago, IL | Dallas, TX
Houston, TX | New York, NY | Philadelphia, PA | Washington, D.C.

Firm Contact | Robert J. Kiggins | rkiggins@cm.law **CO-CHAIR**

BRIEF DESCRIPTION OF EXPERIENCE

Robert J. Kiggins is a tax and transactional lawyer with over 45 years of experience. With a Masters of Law in Taxation from New York University of law, and his JD degree from the Cornell Law School, he has gained extensive experience in corporate finance and tax matters involving securities broker-dealers, investment advisors, investment companies, life insurance companies, hedge funds, medical practice purchases and sales, insurance agencies and bank expansion into insurance and securities fields. Mr. Kiggins is especially familiar with the regulations and compliance imposed on securities broker-dealers, investment advisors, insurance companies and insurance agencies.

Drohan Lee LLP

dlkny.com

Office Locations | New York, NY

Firm Contact | Jae W. Lee | jlee@dlkny.com **CO-CHAIR**

BRIEF DESCRIPTION OF EXPERIENCE

Jae W. Lee graduated with honors from Dartmouth College in 1991, Fordham University School of Law in 1996 and New York University School of Law with a Master of Laws in Taxation in 1997. Mr. Lee's practice includes advising on tax aspects of corporate and partnership structuring, mergers and acquisition, cross-border transactions and private offerings. In addition, Mr. Lee heads the firm's public finance practice which includes representation of municipal bond issuers and underwriters.

Gardner Skelton PLLC

gardnerskelton.com

Office Locations | Charlotte, NC

Firm Contact | Fred Parker | fred@gardnerskelton.com

BRIEF DESCRIPTION OF EXPERIENCE

Fred Parker advises businesses and individuals in matters involving federal, state, and local taxation and related corporate transactions. He earned his Masters of Law in Taxation from Georgetown University Law Center and has a background in business litigation. This experience allows Fred to offer a unique perspective to his clients in order to analyze available options and achieve better outcomes.

Moore & Associates

kteyamoore.com

Office Locations | Bowie, MD

Firm Contact | K. "Teya" Moore | kkm@kteyamoore.com

BRIEF DESCRIPTION OF EXPERIENCE

K. "Teya" Moore is a transactional attorney with a law degree from New York University and a LL.M. (master's in taxation) from Georgetown University Law Center. He has extensive experience in developing and closing complex business transactions, including tax deferred reorganizations or mergers and acquisitions, stock and asset acquisitions. He also has significant experience in structuring or providing counsel to regarding sophisticated real estate ownership arrangements for owners and developers, institutional investors, funds and commercial lenders. He is currently managing an asset sale valued at over 1.2 billion and serves as legal counsel to the fund selling the asset to international investors.

Rusing Lopez & Lizardi, PLLC

rlaz.com

Office Locations | Tucson, AZ | Phoenix, AZ

Firm Contact | Robert Lloyd | rlloyd@rlaz.com

BRIEF DESCRIPTION OF EXPERIENCE

Robert Lloyd has practiced law for over 40 years. With a Master of Laws in Taxation from Boston University School of Law, Lloyd's practice has primarily focused on corporate, securities and tax law. He has represented publicly traded clients and served as counsel to corporate boards of directors of public entities.

Sanchez-Medina, Gonzalez, Quesada, Lage, Gomez & Machado LLP

smgqlaw.com

Office Location | Miami, FL

Firm Contact | Andrew G. Portillo | aportillo@smgqlaw.com

BRIEF DESCRIPTION OF EXPERIENCE

Andrew G. Portillo's practice includes tax and corporate law and other general transactional services. Mr. Portillo focuses on U.S./cross border taxation for individuals and businesses, including overall tax minimization, business/entity structuring, and domestic and offshore tax compliance. Mr. Portillo received his Juris Doctor from DePaul University College of Law in Chicago, Illinois, and a Master of Law in Taxation from the University of Miami in Miami, Florida.



NAMWOLF

TRANSACTIONAL
PRACTICE AREA COMMITTEE

TECHNOLOGY SUBCOMMITTEE

The Technology Subcommittee comprises member firms that specialize in a full range of technology-focused legal services. Our practices encompass complex transactions, advanced technologies, data privacy, cybersecurity, information technology, enterprise technology, intellectual property, artificial intelligence (AI), Internet of things (IoT) and other technology-based services and related intellectual property issues. Members include lawyers that have held leadership positions within AmLaw 100 firms and Fortune 100 companies, and who are leading transactions that impact over 11 figures in annual operating revenues. Clients served by our member firms range from start-ups to Fortune 100 to Global Fortune 500 companies.

Specific Areas of Expertise

Advanced Technology

- Artificial Intelligence (AI)
- Blockchain
- Cryptocurrency
- Data Analytics and Mining
- Fintech & Legaltech
- IoT (Internet of Things)
- Smart Contracts

Complex Transactions

- Asset Transfers
- Data Center Co-Locations
- Outsourcing, On-Shoring, Near-Shoring & Offshoring
- Transfer Pricing

Cybersecurity, Data

Protection & Privacy

- EU GDPR and other Global Privacy
- PCI DSS (Payment Card Industry Data Security Standards)
- State and Federal Privacy Requirements
- Vendor and Partnership Security Management

Enterprise Technology

- Cloud/SaaS/PaaS
- Enterprise Resource Platforms (ERP)
- Open Source
- Software Licensing
- Vendor Sourcing Best Practices & Templates

Intellectual Property

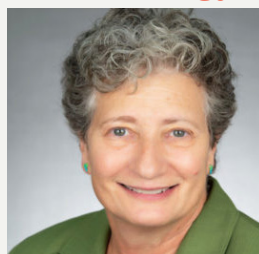
- Licensing & Royalty Programs
- Software and Business Method Patents

IT-Related Corporate Requirements

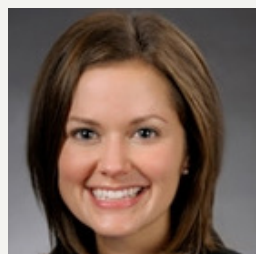
- Audits, Compliance and Risk Management
- Government Relations
- Litigation
- Policies & Procedures
- New Media
- e-Commerce
- Gamification
- Social Networks
- Virtual & Augmented Reality

Telecommunications

Technology Subcommittee Co-Chairs:



Peggy A. Miller
MWH Law Group
Special Counsel
peggy.miller@mwhlawgroup.com



Laurie Selkowitz
Wargo French Singer
Partner
lselkowitz@wargofrench.com

Acceleron Law Group, LLP

acceleronlaw.com

Office Locations | Silicon Valley, CA | Southern California | Washington, D.C.

Firm Contact | Fred Hasani | fhasani@acceleronlaw.com

BRIEF DESCRIPTION OF EXPERIENCE

The firm represents Fortune 500 caliber companies in connection with the negotiation of technology transactions and agreements, including software (SaaS), data and content licensing agreements. Representative clients include Cox Media Group, Kelley Blue Book, Autotrader.com, Paciolan and USC. Our attorneys previously served as in-house counsel to high profile technology companies and as outside counsel at national law firms such as Cooley, Gibson Dunn, Wilson Sonsini, DLA Piper and Morgan Lewis.

AlvaradoSmith

alvaradosmith.com

Office Locations | Orange County, CA | Los Angeles, CA | San Francisco, CA

Firm Contact | Thomas Zeigler | tzeigler@alvaradosmith.com

BRIEF DESCRIPTION OF EXPERIENCE

We assist with tech law-related needs, from drafting complex licensing agreement to cloud contracts, hosting, colocation, data center storage agreements, GDPR and Participation Agreements. We have experience in the application of state and federal laws relating to privacy, social media, advertising, ecommerce, intellectual property, data security and incident response.

BurgherGray LLP

burghergray.com

Office Locations | New York, NY | Washington, D.C. | Miami, FL

Firm Contact | Jephthe Lanthia | jlanthia@burghergray.com

BRIEF DESCRIPTION OF EXPERIENCE

With experience in various traditional and advanced technologies (e.g., fintech, blockchain, privacy and cybersecurity), our agile and adaptive Technology & IP Group is well equipped to help our clients stay abreast of ongoing technology and IP legal developments and best practices and identify and evaluate implications for their compliance programs, risk management strategies and other business functions.

Chen Malin LLP

chenmalin.com

Office Location | Dallas, TX

Firm Contact | Li Chen | lchen@chenmalin.com

BRIEF DESCRIPTION OF EXPERIENCE

Multiple Fortune 100 and Global Fortune 500 companies entrust us with their commercial and IT contracts. We lead transactions that impact 11 figures in annual revenues; our clients hail from various industries, including financial, media, electronics, aviation, auto, and manufacturing; and at least one Fortune 50 company sought our guidance after negotiating against us. Our lawyers previously held senior positions at Sidley, including as Head of the IP Group in Dallas.

Culhane Meadows PLLC

culhanemeadows.com

Office Locations | Atlanta, GA | Austin, TX | Boston, MA | Chicago, IL | Dallas, TX

Houston, TX | New York, NY | Philadelphia, PA | Washington, D.C.

Firm Contact | Heather Haughian | hhaughian@culhanemeadows.com

BRIEF DESCRIPTION OF EXPERIENCE

Technology development, consulting and services agreements; Software licensing and maintenance agreements; Hardware procurement and leasing; Evaluation (beta) licenses; Software as a Service (SaaS) licensing models and agreements; Outsourcing transactions; Hosting, Colocation and Data Center Services agreements; Internet and eCommerce offerings; Privacy and data security.

DTO Law

dtolaw.com

Office Locations | California

Firm Contact | Marcos "Mark" Tarango | mtarango@dtolaw.com

BRIEF DESCRIPTION OF EXPERIENCE

DTO Law can provide both large and small companies with innovative and scalable legal solutions and advisory services for technology-related transactions. We have assisted Fortune 500 and Fortune Global 500 executives and legal counsel with the structuring, negotiation, execution, and modification of transactions for technology matters. Our services include software licensing, asset purchases and sales, supply agreements, and business process outsourcing, among other areas. The firm's attorneys have previously worked at some of the largest and most respected law firms in the country and are able to deliver exceptional, client-focused results.

Griesing Law, LLC

griesinglaw.com

Office Locations | Philadelphia, PA | New York, NY | Cincinnati, OH

Firm Contact | Pamela M. Harper | p Harper@griesinglaw.com

BRIEF DESCRIPTION OF EXPERIENCE

Griesing Law has experience representing technology and telecommunications companies in a variety of complex transactions, with a particular focus on the rapidly evolving areas of cybersecurity and privacy. We provide exceptional and cost-effective legal solutions that protect our clients and enable them to leverage their assets to gain a competitive advantage.

KPPB LAW

kppblaw.com

Office Locations | Atlanta, GA | New York, NY | Houston, TX | Northern VA

Firm Contact | Sonjui L. Kumar | skumar@kppblaw.com

BRIEF DESCRIPTION OF EXPERIENCE

KPPB Law's technology practice includes the representation of our clients with respect to their technology contracts including drafting and negotiation of licensing and service agreements.

MWH Law Group LLP

mwhlawgroup.com

Office Locations | Milwaukee, WI | Indianapolis, IN | Chicago, IL

West Des Moines, IA

Firm Contact | Peggy Miller | peggy.miller@mwhlawgroup.com **CO-CHAIR**

BRIEF DESCRIPTION OF EXPERIENCE

The MWH Technology Law Group's attorneys have over 70 years of collective experience in technology-related legal matters including creation, licensing and use of proprietary and open-source software, mobile apps, websites, social media, digital content/advertising, SaaS/PaaS/IaaS/cloud arrangements, outsourcing, e-Commerce, IoT, data privacy, and MSA/SOW agreements.

Patrick Law Group

patricklawgroup.com

Office Locations | Atlanta, GA | Chicago, IL

Firm Contact | Elizabeth Patrick | lpatrik@patricklawgroup.com

BRIEF DESCRIPTION OF EXPERIENCE

Patrick Law Group is an agile, results-driven law firm focused on negotiating business contracts, with expertise in technology and general commercial transactions, including artificial intelligence, robotic process automation, mobile applications, data analytics, technology development and license arrangements and US and global data privacy laws and regulations.

Peacock Law P.C.

peacocklaw.com

Office Locations | Albuquerque, NM | New York, NY

Firm Contact | Justin Muehlmeier | jrm@peacocklaw.com

BRIEF DESCRIPTION OF EXPERIENCE

As a full-service Intellectual Property law firm, we have, for over 23 years, assisted companies big and small generate value from their great ideas. Having negotiated and drafted thousands of complex transactions based on IP, we know how to build lasting and profitable business relationships for our clients.

Rusing Lopez & Lizardi, PLLC

rllaz.com

Office Locations | Tucson, AZ | Phoenix, AZ

Firm Contact | Tim Reckart | treckart@rllaz.com

BRIEF DESCRIPTION OF EXPERIENCE

Our team expertly advises clients in complex tech-based transactions covering many disciplines, including pharmaceuticals, diagnostics, optics, cloud-based computing, materials, & software. We have negotiated hundreds of technology development agreements and licenses, helped clients navigate technology joint ventures, and guided them through trade-secret audits.

Sanchez & Amador, LLP

sanchez-amador.com

Office Location | Los Angeles, CA

Firm Contact | Marco Zambrano | zambrano@sanchez-amador.com

BRIEF DESCRIPTION OF EXPERIENCE

Attorneys in our Technology Transaction practice group bring a combination of technical knowledge, business acumen, and significant experience. We represent both buyers and sellers of technology. Representative practice areas include Outsourcing, Software as a Service (SaaS), Cloud Services, Privacy and Cybersecurity matters, including statements and policies.

Sapientia Law Group, PLLC

sapientialaw.com

Office Location | Minneapolis, MN

Firm Contact | Nick Leonard | nickl@sapientialaw.com

BRIEF DESCRIPTION OF EXPERIENCE

We have experience negotiating/drafting licenses and analyzing patentability and infringement; trademark registration/prosecution, licensing, and overall branding consultation; registering, negotiating/drafting licenses, and enforcing copyrights. We also have experience litigating intellectual property claims.

Talem IP Law LLP

talemip.com

Office Location | Gainesville, FL

Firm Contact | Wendy Zimbone | zimbone@talemip.com

BRIEF DESCRIPTION OF EXPERIENCE

Talem IP provides clients with comprehensive intellectual property solutions including all transactional agreements related to IP such as technology licensing agreements, software agreements, development agreements, research agreements, hosting/SaaS agreements, manufacturing agreements, supplier agreements, and other related contracts. Talem IP believes strongly in helping our clients create value in their organizations through a deep-rooted understanding of how an organization's IP and contracts further the organization's business opportunities.

Walsh Pizzi O'Reilly Falanga LLP

walsh.law

Office Locations | Newark, NJ | New York, NY | Philadelphia, PA

Firm Contact | Peter Pizzi | ppizzi@walsh.law

BRIEF DESCRIPTION OF EXPERIENCE

We assist in preparing terms and conditions for web-based businesses and mobile apps, including e-commerce and gaming apps, and advise on data breach preparedness and best practices. We also handle matters at the intersection of data and privacy and other fields of law, such as employment and protection of corporate IP, trade secrets and other proprietary information.

Wargo French Singer

wargofrench.com

Office Locations | Atlanta, GA | Miami, FL | Los Angeles, CA

Firm Contact | Laurie Selkowitz | lsekowitz@wargofrench.com **CO-CHAIR**

BRIEF DESCRIPTION OF EXPERIENCE

We advise national and international companies regarding complex business transactions, technology and IP acquisition and licensing, data privacy and security, compliance and risk management, and strategic business issues. We work with clients across industries regarding new and emerging technology and expansion into new markets, distribution channels and product lines.

Wong Fleming

wongfleming.com

Office Locations | Seattle, WA | Redmond, WA | San Diego, CA | Houston, TX

Princeton, NJ | Atlanta, GA

Firm Contact | Ramina Dehkoda-Steele | rdehkoda@wongfleming.com

BRIEF DESCRIPTION OF EXPERIENCE

The transactional group provides comprehensive transactional and technical expertise on matters including master services agreements, data licenses, cloud computing, SAAS agreements, liability clauses privacy, and maintenance agreements. We have assisted technological companies, public and privately held companies. Our attorneys provide knowledge intensive solutions and service to companies looking for help with negotiations, agreements, and licensing. The attorneys in our Transactional Group have represented Fortune 500 companies in transactional and technology matters.

The background of the entire page is a solid orange color. Overlaid on this is a faint, semi-transparent image of a laptop. The laptop is open, and its screen displays a network diagram consisting of numerous white dots connected by thin white lines, representing a complex web or data network. The laptop's keyboard and trackpad are also visible in a similar semi-transparent style.

NAMWOLF

TRANSACTIONAL
PRACTICE AREA COMMITTEE

namwolf.org/practice-area-committee/pac-transactional